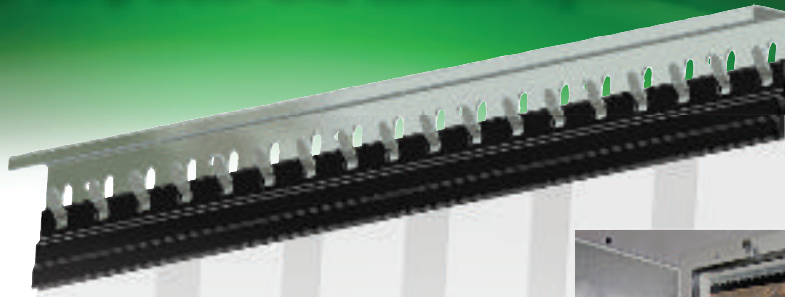


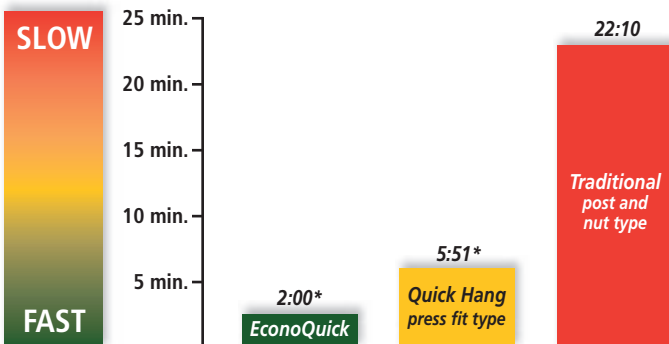
# EconoQuick™\*

## Modular Strip Door and Curtain System



### Installs 3x to 10x faster!

Installing strip doors used to require a series of time-consuming steps — installation of brackets, laying out the strips, hanging individual strips, maintaining the proper strip to strip overlap, convex to concave curl and attaching the retaining hardware to account for different strip thickness. *But not anymore!* The pre-assembled EconoQuick™ multistrip extrusion eliminates the time consuming layout, overlap, alignment guesswork and the hanging of each individual strip. Also, strip clips and fasteners have been completely eliminated!



\*Based on actual side-by-side installation of comparable 3' x 7' wall-mounted doors. See video for yourself at [www.stripdoorsonline.com/EQVideo](http://www.stripdoorsonline.com/EQVideo).



### Stockable Design!

EconoQuick's unique modular design (patent pending) allows you to stock a limited number of SKU's to fill a wide variety of openings. The 2' and 3' multi strip sections of either 8" or 12" strips with pre-determined overlap in 7' and 9' lengths, are simply added together for unlimited size combinations.

- No custom ordering!
- No waiting for delivery!
- No labor intensive installation process!
- Immediate response to an emergency!
- EconoQuick Strip Doors are stockable on service trucks too!

Ask about our Stocking Kit Options!

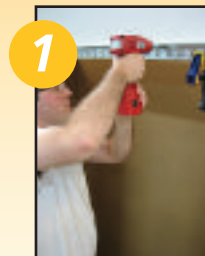


### Hangs Flat right out of the box

No need to lay strips out for 24 hours prior to installation. EconoQuick's unique poly-bagged, roll core packaging eliminates twisting, puckering and curling. Also, since the modules are rolled with the mounting end outside, there is no need to unroll before

hanging. So, when you are ready to install just open, hang and you're done!

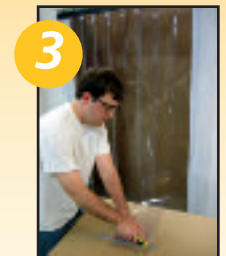
### It's as easy as 1, 2, 3!



Just attach the universal mounting bracket to a flat surface over the opening or mount in jamb.



Lift the multistrip roll to the bracket, drop the slotted extrusion over the bracket fingers, and let the strips drop to fill the opening.



Trim the strip length and side to insure a good seal and you're finished!

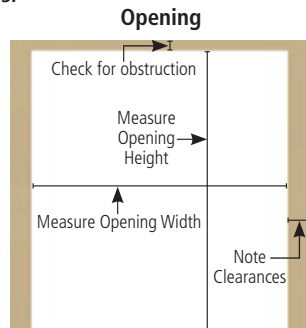
 Chase Doors  
World's Leading Manufacturer of Traffic Doors

## How to Order

1. Measure your opening (see drawing – How to Measure Your Opening). Check for any obstructions near the opening that may affect the mounting of the door to the surface. Common obstructions are lights, switches, vents and drain lines from coils. If you choose wall mount, we recommend upsizing an additional 3" - 6" overlap per side. (See **1** below.)
2. Decide strip width and thickness using the General Application information in the chart below (**2**).
3. Select appropriate length of strip. (See **3** in chart.)
4. Choose the appropriate number of either 2' or 3' modules to cover the width of the opening. Note that by combining 2' and 3' modules, any whole foot dimension door can be built. For wall mount applications we recommend upsizing an additional 3" - 6" overlap per side. (See **4** in chart.)

**Note:** If you are purchasing in bulk, simply select the desired quantities of each module number from the general application chart below or contact the factory about our Stocking Kit Options. Additional volume discounts apply at the 20 and 40 module levels.

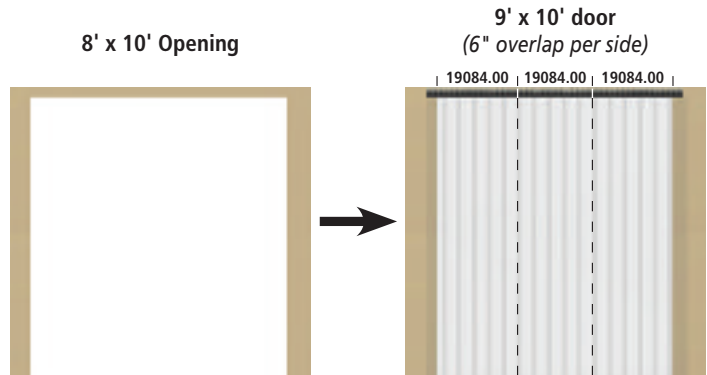
### 1 How to Measure Your Opening



## Ordering Examples:

### Flat Wall Mount for an 8' x 10' opening for Industrial applications

Order three (3) – 19084.00 EconoQuick 3' x 10' modules, thus creating a 9' x 10' finished dimension flat wall mount door which allows 6" of overlap per side.



### In Jamb Mount for an 8' x 10' opening for Industrial applications

Order two (2) – 19084.00 EconoQuick 3' x 10' modules and one (1) – 19081.00 EconoQuick 2' x 10' modules, thus creating an 8' x 10' finished dimension in jamb mount door.

2			3		4		Module Model No.	
General Application	Strip Width x Thickness	Strip Overlap	Module length	Maximum Finished Length (Including galvanized bracket)	Module Width	With standard galvanized mounting bracket (for new installations)	Without galvanized mounting bracket (for retrofits & replacements)	
<b>Personnel to Light Industrial:</b> For use in walk-in coolers*, and doorways with cart, pallet jack and light forklift traffic. Generally for interior applications, but can be used in small exterior doorways with moderate external air movement.	8" x .080"	50%	7 ft.	87.5"	2 ft.	19076.00	19076.50	
					3 ft.	19078.00	19078.50	
			9 ft.	111.5"	2 ft.	19077.00	19077.50	
					3 ft.	19079.00	19079.50	
<b>Industrial:</b> Good for traffic ranging from pallet jack to heavy lift truck traffic, in doorways and coolers*. Good for exterior doorways and dock enclosures.	12" x .120"	50%	8 ft.	99.5"	2 ft.	19080.00	19080.50	
					3 ft.	19083.00	19083.50	
			10 ft.	123.5"	2 ft.	19081.00	19081.50	
					3 ft.	19084.00	19084.50	
			12 ft.	147.5"	2 ft.	19082.00	19082.50	
					3 ft.	19085.00	19085.50	

\*For use in coolers down to 35° F. Low-temp version coming soon, check with factory for availability.

