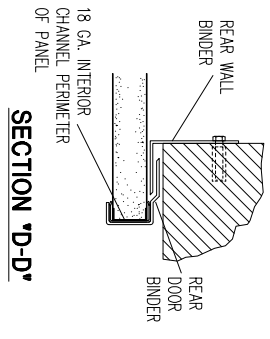
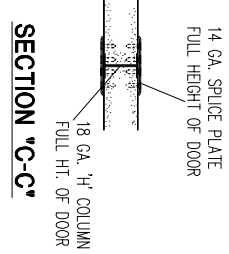
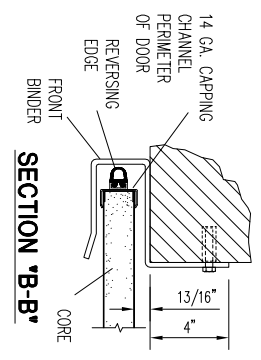


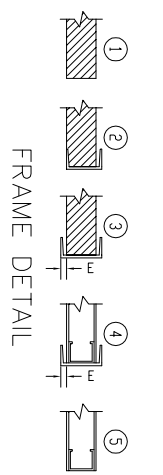
**NOTES**

- BINDERS ARE ATTACHED TO OPENING WITH 3/8" x 1" THREADCUTTING SCREWS FOR STEEL JAMBS OR 3/8" WEDGE ANCHORS FOR MASONRY JAMBS.
- CONTROL BOX MAY BE LOCATED AT EYE LEVEL FOR ACCESSIBILITY.



**SECTION 'A-A'**

**SAINO SERIES 1000**  
**SAINO SERIES 2000, 250° F. TEMP. RISE**  
 AUTOMATIC DOOR WITH F1900 OPERATOR  
 U.L. LABELED MODULAR DOORS



TAG MARK	DOOR TYPE	OPENING		SLIDE PLAN		FINISH DOOR		NO. OF PANELS	WALL THICKNESS	FRAME DETAIL	E	OPERATOR	NEMA	CLEARANCE REQ'D			U.L. LABEL	CRUSH PLATES	TRACK-HOOD	WEATHER-STRIPPING SYSTEM	REMARKS
		WIDTH	HEIGHT	WIDTH	HEIGHT	QLOS. SIDE	OPNG. SIDE							HEAD							
																					SEE NOTES ABOVE

Tel: (800) 543-4455  
 www.chasedoors.com  
 FAX: (800) 978-6570

JOB		SOLD TO	WALL THICKNESS	FRAME DETAIL	E	OPERATOR	NEMA	CLEARANCE REQ'D			U.L. LABEL	CRUSH PLATES	TRACK-HOOD	WEATHER-STRIPPING SYSTEM	REMARKS
NO. OF PANELS	WALL THICKNESS							QLOS. SIDE	OPNG. SIDE	HEAD					