

MODEL #: XLP5000 (Single) * FINISHED OPENING SIZE: Width = Height = QTY: QUOTATION ORDER

** The Chase XLP 5000 is only Available in the following sizes:
24" to 42" Widths and 78" to 96" Heights!*

PO#

OPTIONS

VISION PANEL

- CLEAR ACRYLIC
- SMOKE TINTED ACRYLIC

JAMB GUARD

- NO JAMB GUARD
- JAMB GUARD (9" Inch Only)

JAMB MATERIAL

- WOOD
- METAL

BACK SPINE (Powder Coated Aluminum)

- BLACK
- GRAY

XLP COLOR OPTIONS

Solid Colors

- BEIGE
- BLACK
- GRAY
- LIGHT GRAY
- RED
- BLUE

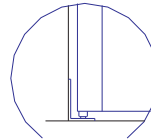
Granite Colors

- GRAY

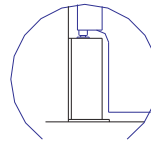


1559 Bullnose Gasket

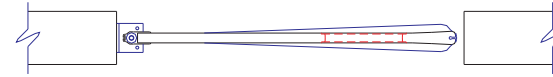
THE XLP5000 SINGLE DOOR COMES WITH A "BULLNOSE GASKET (Pt # 1559)" INSTALLED ON THE LEADING EDGE OF THE PANEL. THERE IS NO DEVIATION FROM THIS GASKET!



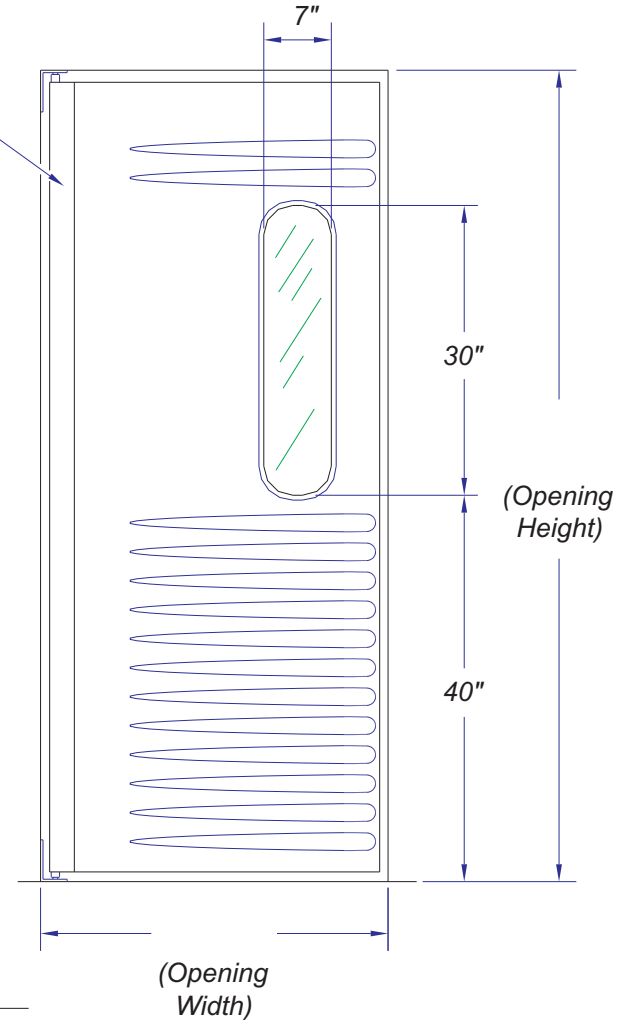
NO JAMB GUARD



9" JAMB GUARD



BACK SPINE



IMPORTANT NOTES:

The "XLP5000" is manufactured to the dimensions of the "Finished Opening". Due to the tolerances established for Width and Height, customer must provide accurate dimensions of the opening. Please verify the dimensions you have entered!

By signing below the customer assumes all responsibility for the dimensions given and registered on this document. Production will not begin on the "XLP5000" until this document is signed, dated and returned to Chase Doors.

Approved By: _____ Date: _____

NOTES:

DATE

Chase Doors
 World's Leading Manufacturer Of Traffic Doors
 Cincinnati Ohio, and Redmond Oregon • www.chasedoors.com
 Phone Toll Free: 1-800-543-4455 • FAX: 1-800-285-0126

TO:

JOB:

XLP5000 - SINGLE DOOR SHOP DRAWING