

DWG # 2003-R3 REV DATE: 05-14-2007
 DRAWN BY: MLW

PREPARATION

MEASURE WIDTH AND HEIGHT OF FRAMED OPENING AND COMPARE WITH OTHER DIMENSIONS.

FRAMED OPENING DIMENSIONS MUST MEET ORDER DIMENSIONS WITHIN THE FOLLOWING TOLERANCES;

SINGLE DOORS: HEIGHT: ±1/4"
 WIDTH: ±1/4"

DOUBLE DOORS: HEIGHT: ±1/4"
 WIDTH: ±1/4"

IF THE FRAMED OPENING DOES NOT MEET THE ORDER DIMENSIONS WITHIN THESE TOLERANCES CALL THE FACTORY AT 1-800-547-6856

FOR PROPER INSTALLATION

FRAMED OPENINGS MUST BE SQUARE AND PLUMB. MAKE ANY NECESSARY ADJUSTMENTS TO SQUARE AND PLUMB OPENING. DURULITE DOORS MUST BE INSTALLED PLUMB.

DRILL BIT SIZES FOR: ① ③

FOR STEEL JAMBS
 USE: 1/8" DRILL BIT FOR JAMBS UP TO 3/8" THICK. USE 3/16" BIT FOR JAMBS IN EXCESS OF 3/8" THICK.

FOR WOOD JAMBS
 USE: 3/16" DRILL BIT.

FASTENERS FOR: ① ③

FOR STEEL JAMB
 USE: (2) 1/4-14 X 2-1/4" TEK SCREWS ON BASE OF V-CAM

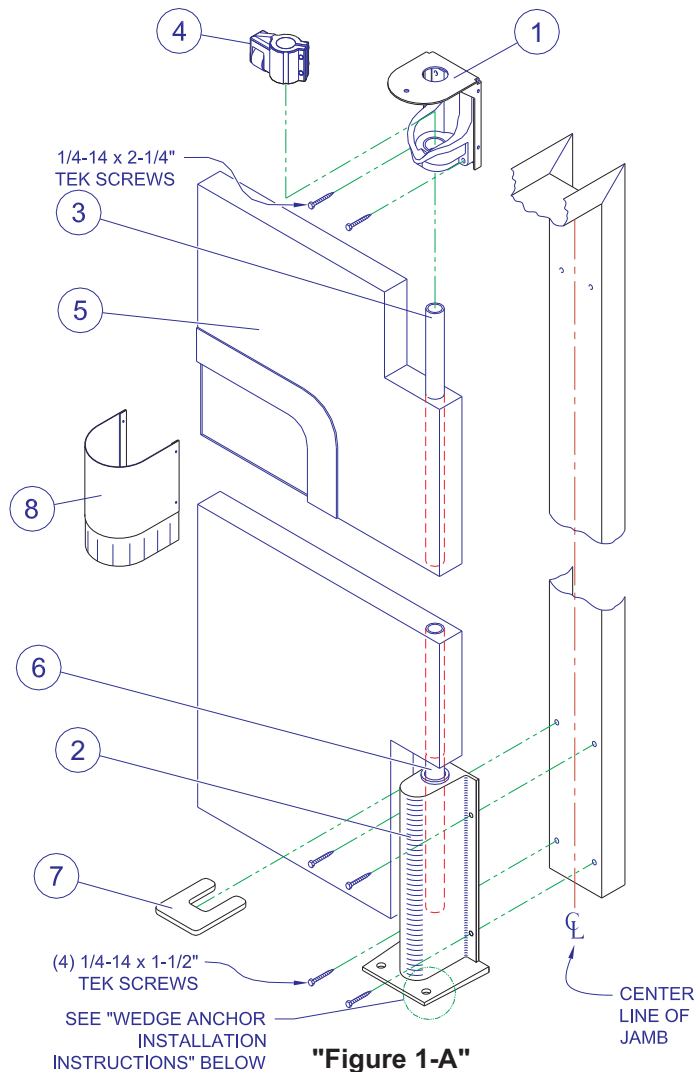
(1) 1/4-14 X 1-1/2" TEK SCREW ON TOP OF V-CAM (2) FOR OLD STYLE

(4) 1/4-14 X 1-1/2" TEK SCREW ON JAMB SIDE OF LOWER HINGE GUARD

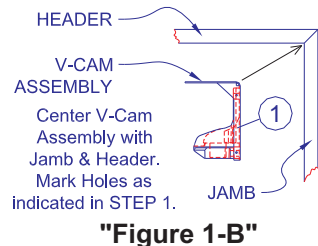
FOR WOOD JAMB
 USE: 1/4" X 3" WOOD SCREWS

RETAILER INSTALLATION INSTRUCTIONS

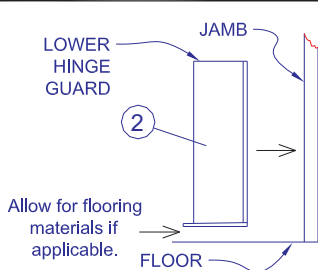
Adapted for the Stainless Steel Mounting Plate



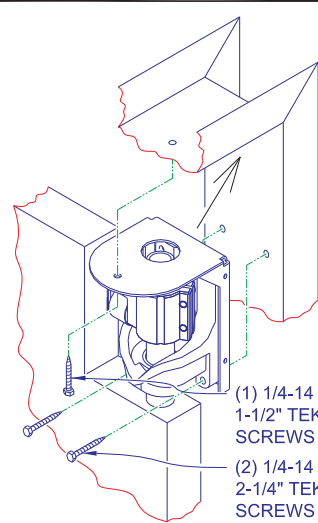
"Figure 1-A"



"Figure 1-B"



"Figure 1-C"



"Figure 1-D"

NOTE: PROCEED ONLY AFTER COMPLETING THE "PREPARATION" SECTION AT LEFT.

STEP 1. MARKING AND DRILLING FOR PILOT HOLES.

IMPORTANT NOTE: IF A FLOORING MATERIAL IS TO BE ADDED AT A LATER TIME IT WILL BE NECESSARY TO ADJUST THE HEIGHT OF THE DOOR ACCORDINGLY. THE ENTIRE ASSEMBLY MUST BE RAISED. THE GAP BETWEEN THE BASE OF THE LOWER HINGE GUARD AND FLOOR MUST EQUAL THE THICKNESS OF THE FLOORING MATERIAL TO BE ADDED. IT IS RECOMMENDED THAT YOU USE A TEMPORARY SHIM, OR SPACER, UNDER THE BASE OF THE LOWER HINGE GUARD.

Place the Lower Hinge Guard ② into the lower corner of Jamb/Floor. Center the Lower Hinge Guard with the Jamb as shown in "Figure 1-A" and mark holes on Jamb with pencil or center punch. Place the V-Cam Assembly ① in the upper corner of Jamb/Header as shown in "Figure 1-B". Center the V-Cam Assembly with the Jamb/Header and mark holes with pencil or center punch. Drill the marked holes on Jamb and Header with appropriate size bit.

Refer to "Drill Bit Sizes" at left to determine what size of bit is needed for your application.

STEP 2. UPPER HINGE ASSEMBLY.

Place the V-Cam Assembly over the Upper Hinge Post ③. Slide the Roller Assembly ④ onto the Upper Hinge Post above the inside flat of the V-Cam (see "Figure 1-A").

NOTE: DO NOT TIGHTEN CAP SCREWS ON V-CAM AT THIS TIME.

STEP 3. MOUNTING DOOR IN JAMB.

Place the completed door assembly into the jamb and line up with drilled pilot holes. It may be necessary to slide the V-Cam and Roller Assemblies down to fit the entire panel assembly into the jamb. Once inside the jamb you can lift the V-Cam and Roller Assemblies to the upper corner as indicated by the Arrow in "Figure 1-D". **SEE IMPORTANT NOTE - STEP 1**

Once in position, insert the appropriate fasteners into the V-Cam and Lower Hinge assemblies and tighten.

STEP 4. ADJUSTING SWING & PINNING ROLLER.

Place the Retailer Shim ⑦ between the Lower Hinge Guard and the lower hinge cutout on the panel ⑤, see "Figure 1-A". Set the Roller Bearing to the Lowest point on the V-Cam (closed position), see "Figure 2-A". Line up the centerline of the panel ⑤ with the centerline of the header and tighten the Cap Screws on the Roller Assembly securely.

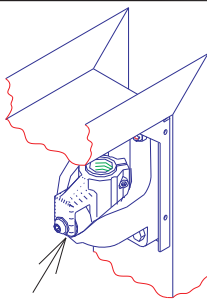
NOTE: TEST THE SWING OF PANEL/PANELS FULLY IN EACH DIRECTION BEFORE PROCEEDING. ONCE THE ROLLER ASSEMBLY IS PINNED THE SWING CAN NOT BE ADJUSTED!

Locate Conical Mark on Roller Assembly, see "Figure 2-B". Make sure panel/panels are properly aligned before proceeding with drilling (see NOTE above). Drill a 3/16" hole completely through the Roller Assembly and Hinge Post ③. Tap Split Pin into Roller Assembly, see "Figure 2-B".

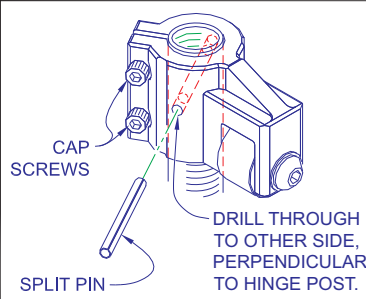
STEP 6. HINGE SEAL & TOP SEAL.

Peel paper from double sided tape on upper Hinge Seal ⑧. Place over V-Cam Assembly ① with cut skirt side down ("Figure 1-A"). Attach with #10 Tek Screws provided.

Remove paper from double sided tape and temporarily attach Top Seal ⑩ to Centerline of header. Close panel/panels and line up the blade of the Top Seal with the centerline of the panel/panels. After adjusting to proper position, fasten Top Seal using #14 Tek Screws provided.



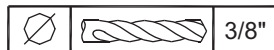
"Figure 2-A"



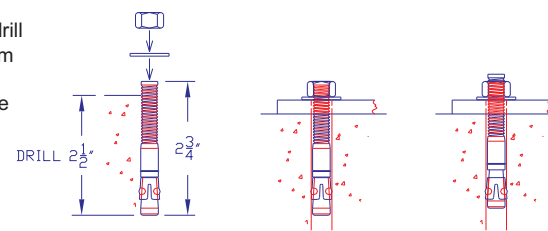
"Figure 2-B"

Using a 3/8" diameter carbide tip bit, drill a hole into the floor material to a minimum depth of 2-1/2" deep, see "Figure 3-A". Use High Pressure Air to clear the hole of debris.

Assemble the nut and washer so that the top of the nut is flush with the top of the anchor, see "Figure 3-B".



WEDGE ANCHOR INSTALLATION INSTRUCTIONS



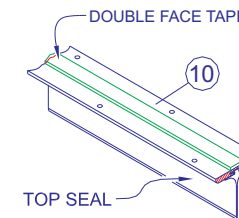
"Figure 3-A" "Figure 3-B" "Figure 3-C"

Drive the anchor into the hole until the nut and washer are flush with the base plate.

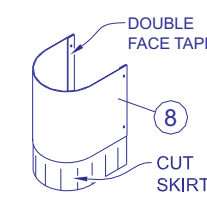
Tighten the nut to between 2 & 5 turns past hand tight ("Figure 3-C"). A Torque Wrench is recommended for optimum performance (refer to chart below).

ANKR-TITE
 (Torque Setting ONLY)

Size	Torque
3/8 Ø	20 - 25 ft. lbs.



TOP SEAL



HINGE SEAL

NOTE: CHECK DOOR AT FULL SWING IN BOTH DIRECTIONS. IT MAY BE NECESSARY TO TRIM GASKET MATERIAL IN SOME AREAS.