

# ELECTRIC BI-PARTING SLIDE DOOR with 1900-RLS OPERATOR

**TYPE & THICKNESS OF DOOR:**

COOLER                      FREEZER                      4" THICK                      6" THICK

**OPENING SIZE:**

FINISHED OPENING WIDTH (W.I.C.):  
FINISHED OPENING HEIGHT (H.I.C.):                      WALL THICKNESS:

**ENTER ROOM TEMPERATURES:**

TEMPERATURE WALL SIDE:                      F (PLEASE PROVIDE)  
TEMPERATURE TRACK SIDE:                      F (PLEASE PROVIDE)

**CLADDING - TRACK SIDE:**

|                            |                            |
|----------------------------|----------------------------|
| EMBOSSED WHITE GALVANIZED. | SMOOTH WHITE GALVANIZED    |
| EMBOSSED BLACK GALVANIZED  | SMOOTH GALVALUME           |
| EMBOSSED GALVALUME         | SMOOTH WHITE ALUMINUM      |
| EMBOSSED WHITE ALUMINUM    | STAINLESS STEEL, #4 FINISH |
| EMBOSSED MILL ALUMINUM     |                            |
| CUSTOM                     |                            |

**CLADDING - WALL SIDE:**

|                            |                            |
|----------------------------|----------------------------|
| EMBOSSED WHITE GALVANIZED. | SMOOTH WHITE GALVANIZED    |
| EMBOSSED BLACK GALVANIZED  | SMOOTH GALVALUME           |
| EMBOSSED GALVALUME         | SMOOTH WHITE ALUMINUM      |
| EMBOSSED WHITE ALUMINUM    | STAINLESS STEEL, #4 FINISH |
| EMBOSSED MILL ALUMINUM     |                            |
| CUSTOM                     |                            |

**VISION WINDOW:**

HEATED                      NON-HEATED                      14" x 14"                      14" x 24"

**KICK PLATE - TRACK SIDE:**

|  |  |                 |
|--|--|-----------------|
| 1/16" DIAMOND PLATE                    | 1/8" DIAMOND PLATE                     | STAINLESS STEEL |
| 12" TALL                      24" TALL | 36" TALL                      48" TALL | Other:          |

**KICK PLATE - WALL SIDE:**

|  |  |                 |
|--|--|-----------------|
| 1/16" DIAMOND PLATE                    | 1/8" DIAMOND PLATE                     | STAINLESS STEEL |
| 12" TALL                      24" TALL | 36" TALL                      48" TALL | Other:          |

**CASINGS AND HEADER:**

**TRACK SIDE:**  
MOLDED PLASTIC POLYMER (MPP)(STD)                      METAL CLAD MPP

**MIRROR SIDE (OPTIONAL):**  
MOLDED PLASTIC POLYMER (MPP)                      METAL CLAD MPP

**THRU WALL (OPTIONAL):**  
MOLDED PLASTIC POLYMER (MPP)                      METAL CLAD MPP  
1" CAREFREE                      1.5" CAREFREE

**VARIABLE SPEED, HEAVY DUTY OPERATOR:**

1900-RLS, NEMA 4 CONTROL, STANDARD MOTOR/REDUCER PACKAGE  
1900-RLS, NEMA 4 CONTROL, WASH DOWN MOTOR/REDUCER PACKAGE

**VOLTAGE:**  
120/1/60                      240/1/60

**CONTROLS:**  
STEP CONTROL (PULL TO OPEN, PULL TO CLOSE)  
TIMER TO CLOSE (PULL TO OPEN, TIME DELAY TO CLOSE)  
3-BUTTON CONTROL (OPEN, CLOSE, STOP)

**SAFETY DEVICES:**  
SINGLE SAFETY BEAM  
DUAL SAFETY BEAMS  
PRESENCE SENSOR                      QTY:

**ACTUATION:**  
PULL CORD ON BOTH SIDES  
NOTE: HEATED PULL CORD STANDARD FOR FREEZER DOORS.  
3-BUTTON STATION, NEMA 1                      QTY:  
3-BUTTON STATION, NEMA 4                      QTY:  
RADIO TRANSMITTER AND RECEIVER                      QTY:  
MOTION SENSOR                      QTY:  
BY OTHERS

**ADDITIONAL OPTIONS:**

OUT BOARD ROLLERS  
HASP LOCK WITH ELECTRICAL INTERLOCK, TRACK SIDE  
TRACK HOOD                      STAINLESS                      POWDER COATED  
ELEVATED COOLER/FREEZER FLOOR                      FLOOR THICKNESS:  
JAMB WALL CAPS, NO INSERTS                      JAMB WALL CAPS WITH INSERTS  
OUTER WIDTH:                      OUTER HEIGHT:                      INSET:

**APPLICATION (REQUIRED):**

- |  |     |    |
|--|-----|----|
| 1. IS THIS DOOR ON A BOX GREATER THAN 3000 SQ FEET   | YES | NO |
| 2. IF NO, IS BOX LOCATED IN COLD STORAGE FACILITY/ATMOSPHERE WITH FLOOR AREA 3000 SQ FEET OR LARGER? (A/C IS NOT COLD STORAGE) | YES | NO |
| 3. DOES THIS APPLICATION INVOLVE MEDICAL, SCIENTIFIC, OR RESEARCH FACILITIES?  | YES | NO |

**SPECIAL INSTRUCTIONS TO MANUFACTURER:**

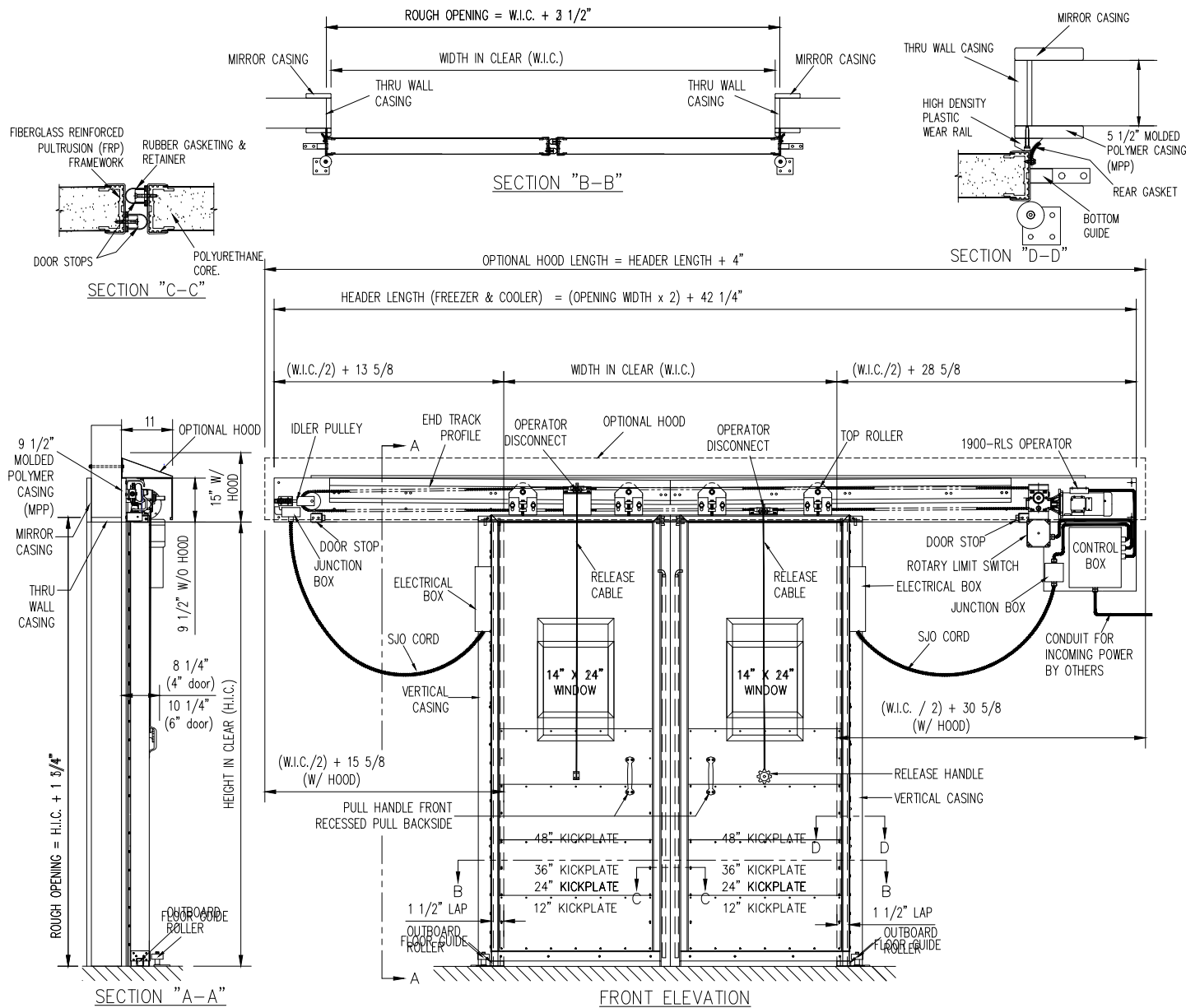


A SENNECA COMPANY

Tel: (800) 543-4455                      www.chasedoors.com                      FAX: (800) 978-6570

|     |         |              |       |            |     |      |         |
|-----|---------|--------------|-------|------------|-----|------|---------|
| JOB |         | CUSTOMER NO: |       | NO. PRINTS | FOR | DATE | REVISED |
|     |         | ORDER NO:    |       |            |     |      |         |
|     |         | DRAWN BY:    |       |            |     |      |         |
|     | SOLD TO |              | SHEET | OF         |     |      |         |

# ELECTRIC BI-PARTING SLIDE DOOR with 1900-RLS OPERATOR



A SENNECA COMPANY

Tel: (800) 543-4455 www.chasedoors.com FAX: (800) 978-6570

|         |              |    |            |     |      |         |
|---------|--------------|----|------------|-----|------|---------|
| JOB     | CUSTOMER NO: |    | NO. PRINTS | FOR | DATE | REVISED |
|         | ORDER NO:    |    |            |     |      |         |
| SOLD TO | DRAWN BY:    |    |            |     |      |         |
|         | SHEET        | OF |            |     |      |         |