

# ELECTRIC BI-PARTING SLIDE DOOR with 1900-RLSM OPERATOR

**TYPE & THICKNESS OF DOOR:**

COOLER	FREEZER	4" THICK	6" THICK
--------	---------	----------	----------

**OPENING SIZE:**

FINISHED OPENING WIDTH (W.I.C.):	WALL THICKNESS:
FINISHED OPENING HEIGHT (H.I.C.):	

**ENTER ROOM TEMPERATURES:**

TEMPERATURE WALL SIDE:	F (PLEASE PROVIDE)
TEMPERATURE TRACK SIDE:	F (PLEASE PROVIDE)

**CLADDING - TRACK SIDE:**

EMBOSSSED WHITE GALVANIZED.	SMOOTH WHITE GALVANIZED
EMBOSSSED BLACK GALVANIZED	SMOOTH GALVALUME
EMBOSSSED GALVALUME	SMOOTH WHITE ALUMINUM
EMBOSSSED WHITE ALUMINUM	STAINLESS STEEL, #4 FINISH
EMBOSSSED MILL ALUMINUM	
CUSTOM	

**CLADDING - WALL SIDE:**

EMBOSSSED WHITE GALVANIZED.	SMOOTH WHITE GALVANIZED
EMBOSSSED BLACK GALVANIZED	SMOOTH GALVALUME
EMBOSSSED GALVALUME	SMOOTH WHITE ALUMINUM
EMBOSSSED WHITE ALUMINUM	STAINLESS STEEL, #4 FINISH
EMBOSSSED MILL ALUMINUM	
CUSTOM	

**VISION WINDOW:**

HEATED	NON-HEATED	14" x 14"	14" x 24"
--------	------------	-----------	-----------

**KICK PLATE - TRACK SIDE:**

1/16" DIAMOND PLATE	1/8" DIAMOND PLATE	STAINLESS STEEL
12" TALL	24" TALL	36" TALL      48" TALL      Other:

**KICK PLATE - WALL SIDE:**

1/16" DIAMOND PLATE	1/8" DIAMOND PLATE	STAINLESS STEEL
12" TALL	24" TALL	36" TALL      48" TALL      Other:

**CASINGS AND HEADER:**

**TRACK SIDE:**

MOLDED PLASTIC POLYMER (MPP)(STD)	METAL CLAD MPP
-----------------------------------	----------------

**MIRROR SIDE (OPTIONAL):**

MOLDED PLASTIC POLYMER (MPP)	METAL CLAD MPP
------------------------------	----------------

**THRU WALL (OPTIONAL):**

MOLDED PLASTIC POLYMER (MPP)	METAL CLAD MPP
1" CAREFREE	1.5" CAREFREE

**HEAVY DUTY OPERATOR:**

1900-RLSM, NEMA 1 CONTROL, STANDARD MOTOR/REDUCER PACKAGE  
 1900-RLSM, NEMA 4 CONTROL, STANDARD MOTOR/REDUCER PACKAGE

**VOLTAGE:**

208/3/60	230/3/60	460/3/60
----------	----------	----------

**CONTROLS:**

STEP CONTROL (PULL TO OPEN, PULL TO CLOSE)

**SAFETY DEVICES:**

ELECTRIC REVERSING EDGE (STANDARD)

**ACTUATION:**

PULL CORD ON BOTH SIDES  
 NOTE: HEATED PULL CORD STANDARD FOR FREEZER DOORS.  
 BY OTHERS

**ADDITIONAL OPTIONS:**

OUT BOARD ROLLERS		
HASP LOCK WITH ELECTRICAL INTERLOCK,	TRACK SIDE	
TRACK HOOD	STAINLESS	POWDER COATED
ELEVATED COOLER/FREEZER FLOOR	FLOOR THICKNESS:	
JAMB WALL CAPS, NO INSERTS	JAMB WALL CAPS WITH INSERTS	
OUTER WIDTH:	OUTER HEIGHT:	INSET:

**APPLICATION (REQUIRED):**

- |  |     |    |
|--|-----|----|
| 1. IS THIS DOOR ON A BOX GREATER THAN 3000 SQ FEET   | YES | NO |
| 2. IF NO, IS BOX LOCATED IN COLD STORAGE FACILITY/ATMOSPHERE WITH FLOOR AREA 3000 SQ FEET OR LARGER? (A/C IS NOT COLD STORAGE) | YES | NO |
| 3. DOES THIS APPLICATION INVOLVE MEDICAL, SCIENTIFIC, OR RESEARCH FACILITIES?  | YES | NO |

**SPECIAL INSTRUCTIONS TO MANUFACTURER:**

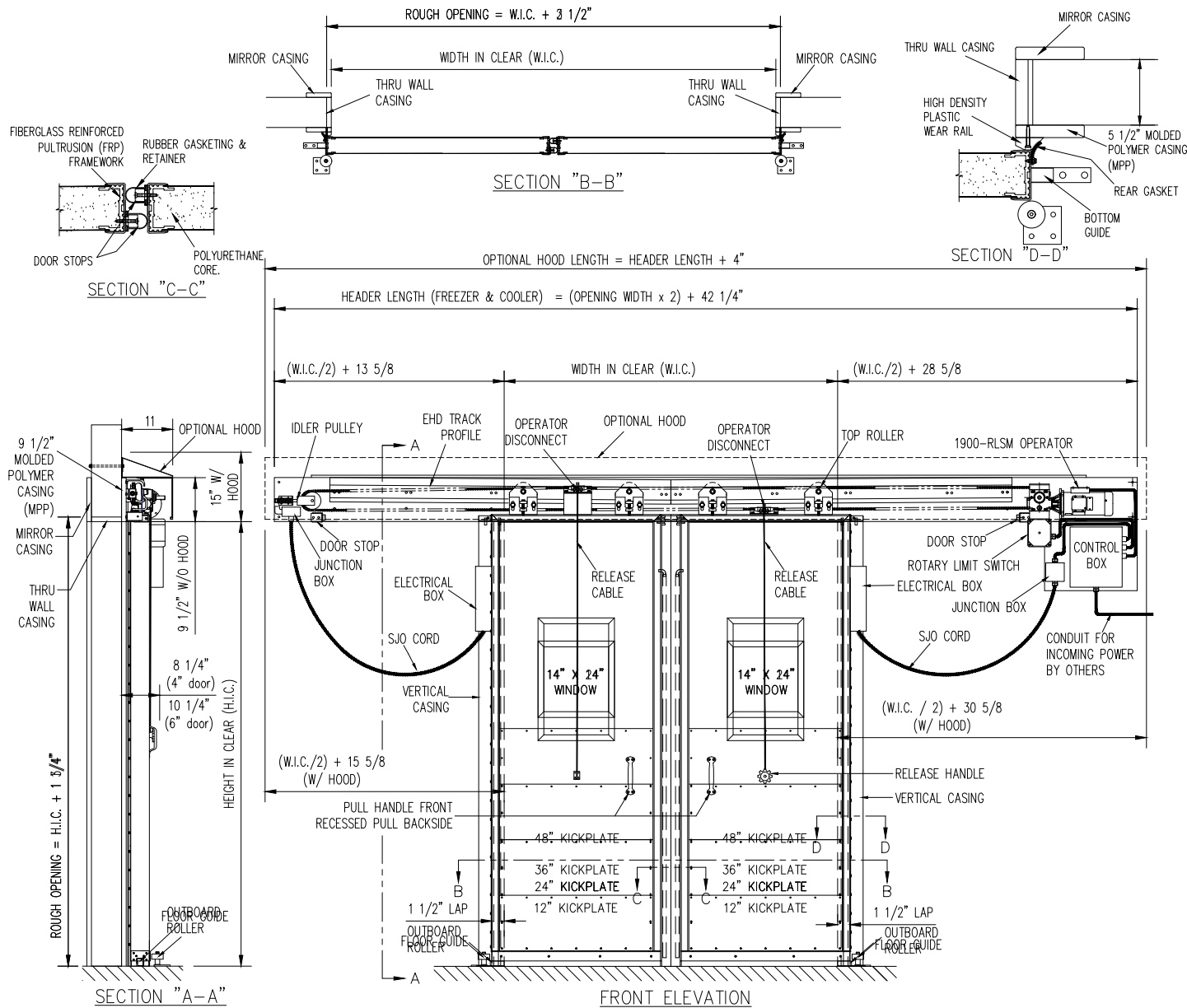




A SENNECA COMPANY

Tel: (800) 543-4455    www.chasedoors.com    FAX: (800) 978-6570

JOB		CUSTOMER NO:		NO. PRINTS	FOR	DATE	REVISED
		ORDER NO:					
		DRAWN BY:					
	SOLD TO		SHEET	OF			

# ELECTRIC BI-PARTING SLIDE DOOR with 1900-RLSM OPERATOR




  
 ③ CENTER PARTING  
 SLIDE PLAN



A SENNECA COMPANY

Tel: (800) 543-4455 www.chasedoors.com FAX: (800) 978-6570

JOB	CUSTOMER NO:		NO. PRINTS	FOR	DATE	REVISED
	ORDER NO:					
SOLD TO	DRAWN BY:					
	SHEET	OF				