

MANUAL BI-PARTING SLIDE DOOR (EXTREME HEAVY DUTY)

TYPE & THICKNESS OF DOOR:

COOLER FREEZER 4" THICK 6" THICK

OPENING SIZE:

FINISHED OPENING WIDTH (W.I.C.):
 FINISHED OPENING HEIGHT (H.I.C.): WALL THICKNESS:

ENTER ROOM TEMPERATURES:

TEMPERATURE INSIDE BOX: F (PLEASE PROVIDE)
 TEMPERATURE OUTSIDE BOX: F (PLEASE PROVIDE)

CLADDING - FRONT SIDE:

EMBOSSSED WHITE GALVANIZED.	SMOOTH WHITE GALVANIZED
EMBOSSSED BLACK GALVANIZED	SMOOTH GALVALUME
EMBOSSSED GALVALUME	SMOOTH WHITE ALUMINUM
EMBOSSSED WHITE ALUMINUM	STAINLESS STEEL, #4 FINISH
EMBOSSSED MILL ALUMINUM	
CUSTOM	

CLADDING - BACK SIDE:

EMBOSSSED WHITE GALVANIZED.	SMOOTH WHITE GALVANIZED
EMBOSSSED BLACK GALVANIZED	SMOOTH GALVALUME
EMBOSSSED GALVALUME	SMOOTH WHITE ALUMINUM
EMBOSSSED WHITE ALUMINUM	STAINLESS STEEL, #4 FINISH
EMBOSSSED MILL ALUMINUM	
CUSTOM	

VISION WINDOW:

HEATED NON-HEATED 14" x 14" 14" x 24"

EXTERIOR (TRACK SIDE) KICK PLATE:

1/16" DIAMOND PLATE	1/8" DIAMOND PLATE	STAINLESS STEEL
12" TALL	24" TALL	36" TALL 48" TALL Other:

INTERIOR (WALL SIDE) KICK PLATE:

1/16" DIAMOND PLATE	STAINLESS STEEL
12" TALL	24" TALL 36" TALL 48" TALL Other:

CASINGS AND HEADER:

TRACK SIDE:

MOLDED PLASTIC POLYMER (MPP)(STD)	METAL CLAD MPP
1" CAREFREE	1.5" CAREFREE

MIRROR SIDE (OPTIONAL):

MOLDED PLASTIC POLYMER (MPP)	METAL CLAD MPP
1" CAREFREE	1.5" CAREFREE

THRU WALL (OPTIONAL):

MOLDED PLASTIC POLYMER (MPP)	METAL CLAD MPP
1" CAREFREE	1.5" CAREFREE

ADDITIONAL OPTIONS:

OUT BOARD ROLLER		
INSIDE SAFETY LOCK WITH RELEASE		
TRACK HOOD	STAINLESS	POWDER COATED
ELEVATED COOLER/FREEZER FLOOR		FLOOR THICKNESS:
JAMB WALL CAPS, NO INSERTS		JAMB WALL CAPS WITH INSERTS
OUTER WIDTH:	OUTER HEIGHT:	INSET:

APPLICATION (REQUIRED):

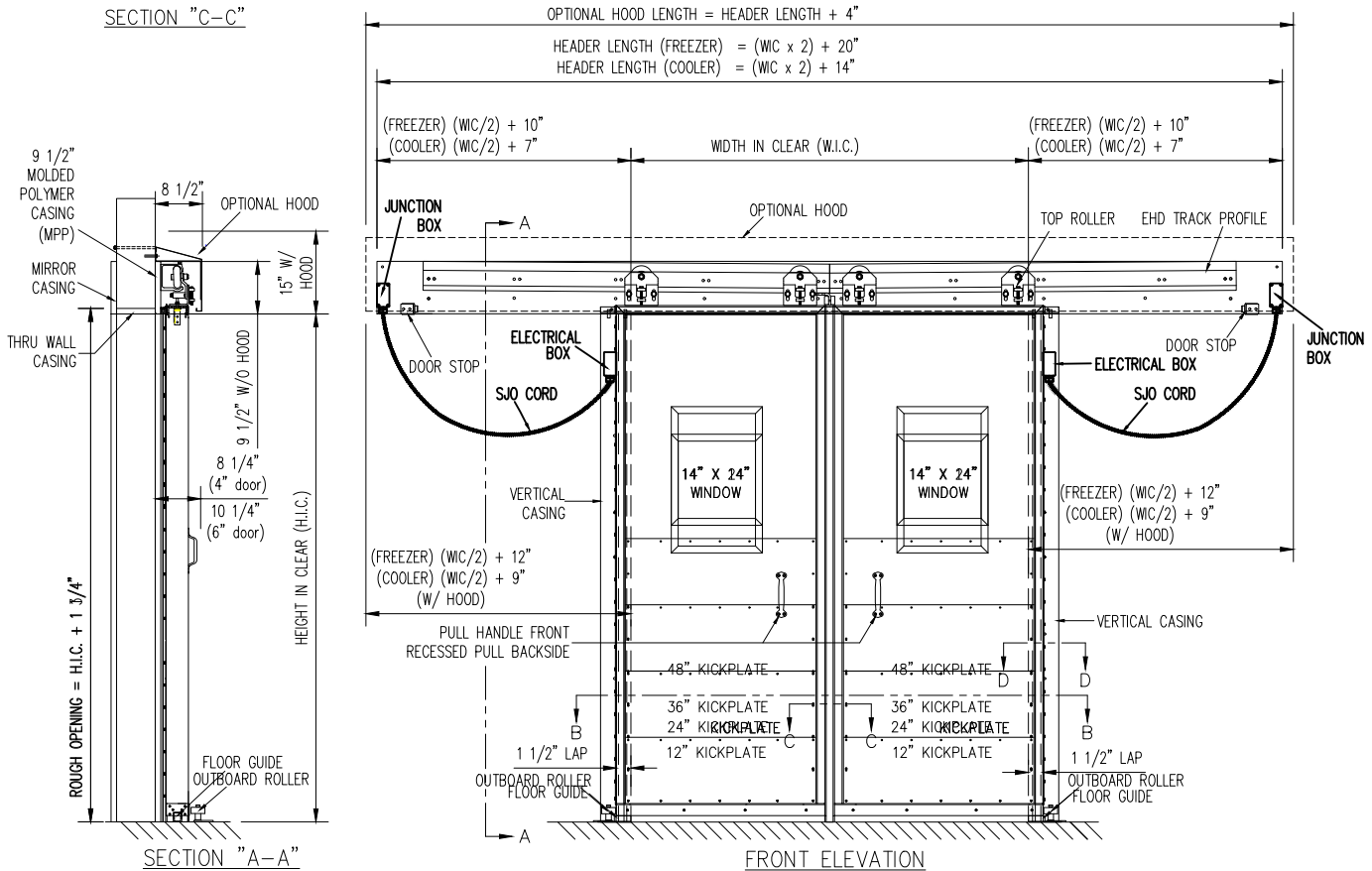
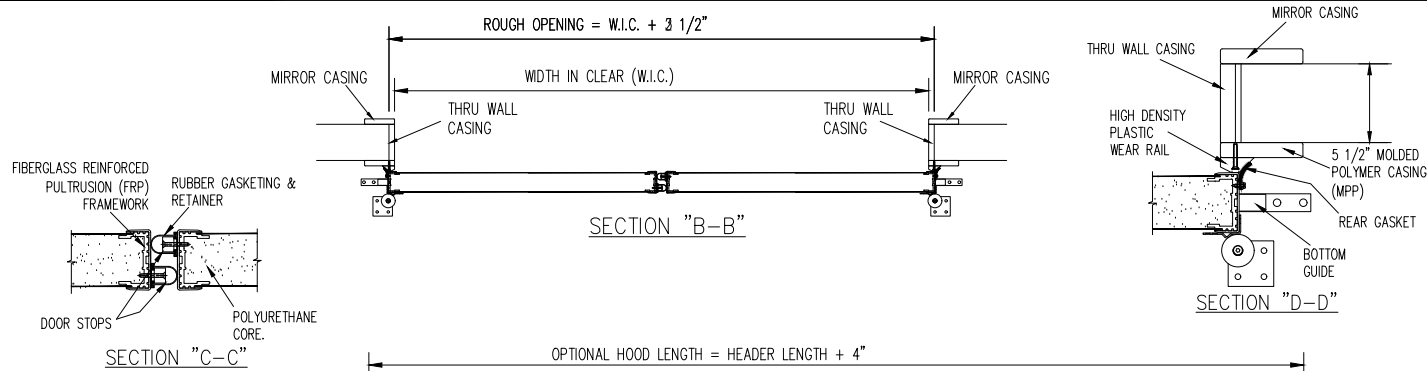
1. IS THIS DOOR ON A BOX GREATER THAN 3000 SQ FEET? YES NO
2. IF NO, IS BOX LOCATED IN COLD STORAGE FACILITY/ATMOSPHERE WITH FLOOR AREA 3000 SQ FEET OR LARGER? (A/C IS NOT COLD STORAGE) YES NO
3. DOES THIS APPLICATION INVOLVE MEDICAL, SCIENTIFIC, OR RESEARCH FACILITIES? YES NO


SPECIAL INSTRUCTIONS TO MANUFACTURER:



JOB		CUSTOMER NO:		NO. PRINTS	FOR	DATE	REVISED	
		ORDER NO:						
	SOLD TO		DRAWN BY:					
			SHEET	OF				

MANUAL BI-PARTING SLIDE DOOR (EXTREME HEAVY DUTY)





 © CENTER PARTING

 SLIDE PLAN

JOB	CUSTOMER NO:		NO. PRINTS	FOR	DATE	REVISED
	ORDER NO:					
SOLD TO	DRAWN BY:					
	SHEET	OF				