

ELECTRIC HORIZONTAL SLIDE DOOR with 1900-RLS OPERATOR

TYPE & THICKNESS OF DOOR:

COOLER FREEZER 4" THICK 6" THICK

OPENING SIZE:

FINISHED OPENING WIDTH (W.I.C.):
FINISHED OPENING HEIGHT (H.I.C.): WALL THICKNESS:

OPENING DIRECTION:

LEFT (LH) RIGHT (RH)

ENTER ROOM TEMPERATURES:

TEMPERATURE WALL SIDE: F (PLEASE PROVIDE)
TEMPERATURE TRACK SIDE: F (PLEASE PROVIDE)

CLADDING - TRACK SIDE:

EMBOSSD WHITE GALVANIZED.	SMOOTH WHITE GALVANIZED
EMBOSSD BLACK GALVANIZED	SMOOTH GALVALUME
EMBOSSD GALVALUME	SMOOTH WHITE ALUMINUM
EMBOSSD WHITE ALUMINUM	STAINLESS STEEL, #4 FINISH
EMBOSSD MILL ALUMINUM	
CUSTOM	

CLADDING - WALL SIDE:

EMBOSSD WHITE GALVANIZED.	SMOOTH WHITE GALVANIZED
EMBOSSD BLACK GALVANIZED	SMOOTH GALVALUME
EMBOSSD GALVALUME	SMOOTH WHITE ALUMINUM
EMBOSSD WHITE ALUMINUM	STAINLESS STEEL, #4 FINISH
EMBOSSD MILL ALUMINUM	
CUSTOM	

VISION WINDOW:

HEATED NON-HEATED 14" x 14" 14" x 24"

KICK PLATE - TRACK SIDE:

1/16" DIAMOND PLATE	1/8" DIAMOND PLATE	STAINLESS STEEL
12" TALL	24" TALL	36" TALL 48" TALL Other:

KICK PLATE - WALL SIDE:

1/16" DIAMOND PLATE	STAINLESS STEEL
12" TALL	24" TALL 36" TALL 48" TALL Other:

APPLICATION (REQUIRED):

- | | | |
|--------------------------------------------------------------------------------------------------------------------------------|-----|----|
| 1. IS THIS DOOR ON A BOX GREATER THAN 3000 SQ FEET | YES | NO |
| 2. IF NO, IS BOX LOCATED IN COLD STORAGE FACILITY/ATMOSPHERE WITH FLOOR AREA 3000 SQ FEET OR LARGER? (A/C IS NOT COLD STORAGE) | YES | NO |
| 3. DOES THIS APPLICATION INVOLVE MEDICAL, SCIENTIFIC, OR RESEARCH FACILITIES? | YES | NO |

CASINGS AND HEADER:

TRACK SIDE:
MOLDED PLASTIC POLYMER (MPP)(STD) METAL CLAD MPP

MIRROR SIDE (OPTIONAL):
MOLDED PLASTIC POLYMER (MPP) METAL CLAD MPP

THRU WALL (OPTIONAL):
MOLDED PLASTIC POLYMER (MPP) METAL CLAD MPP
1" CAREFREE 1.5" CAREFREE

VARIABLE SPEED, HEAVY DUTY OPERATOR:

1900-RLS, NEMA 4 CONTROL, STANDARD MOTOR/REDUCER PACKAGE
1900-RLS, NEMA 4 CONTROL, WASH DOWN MOTOR/REDUCER PACKAGE

VOLTAGE:
120/1/60 240/1/60

CONTROLS:
STEP CONTROL (PULL TO OPEN, PULL TO CLOSE)
TIMER TO CLOSE (PULL TO OPEN, TIME DELAY TO CLOSE)
3-BUTTON CONTROL (OPEN, CLOSE, STOP)

SAFETY DEVICES:
SINGLE SAFETY BEAM
DUAL SAFETY BEAMS
PRESENCE SENSOR QTY:

ACTUATION:
PULL CORD ON BOTH SIDES
NOTE: HEATED PULL CORD STANDARD FOR FREEZER DOORS.
3-BUTTON STATION, NEMA 1 QTY:
3-BUTTON STATION, NEMA 4 QTY:
RADIO TRANSMITTER AND RECEIVER QTY:
MOTION SENSOR QTY:
BY OTHERS

ADDITIONAL OPTIONS:

OUT BOARD ROLLERS
HASP LOCK WITH ELECTRICAL INTERLOCK, TRACK SIDE
TRACK HOOD STAINLESS POWDER COATED
ELEVATED COOLER/FREEZER FLOOR FLOOR THICKNESS:
JAMB WALL CAPS, NO INSERTS JAMB WALL CAPS WITH INSERTS
OUTER WIDTH: OUTER HEIGHT: INSET:

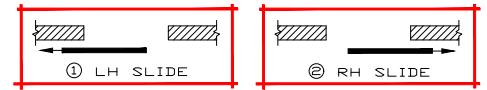
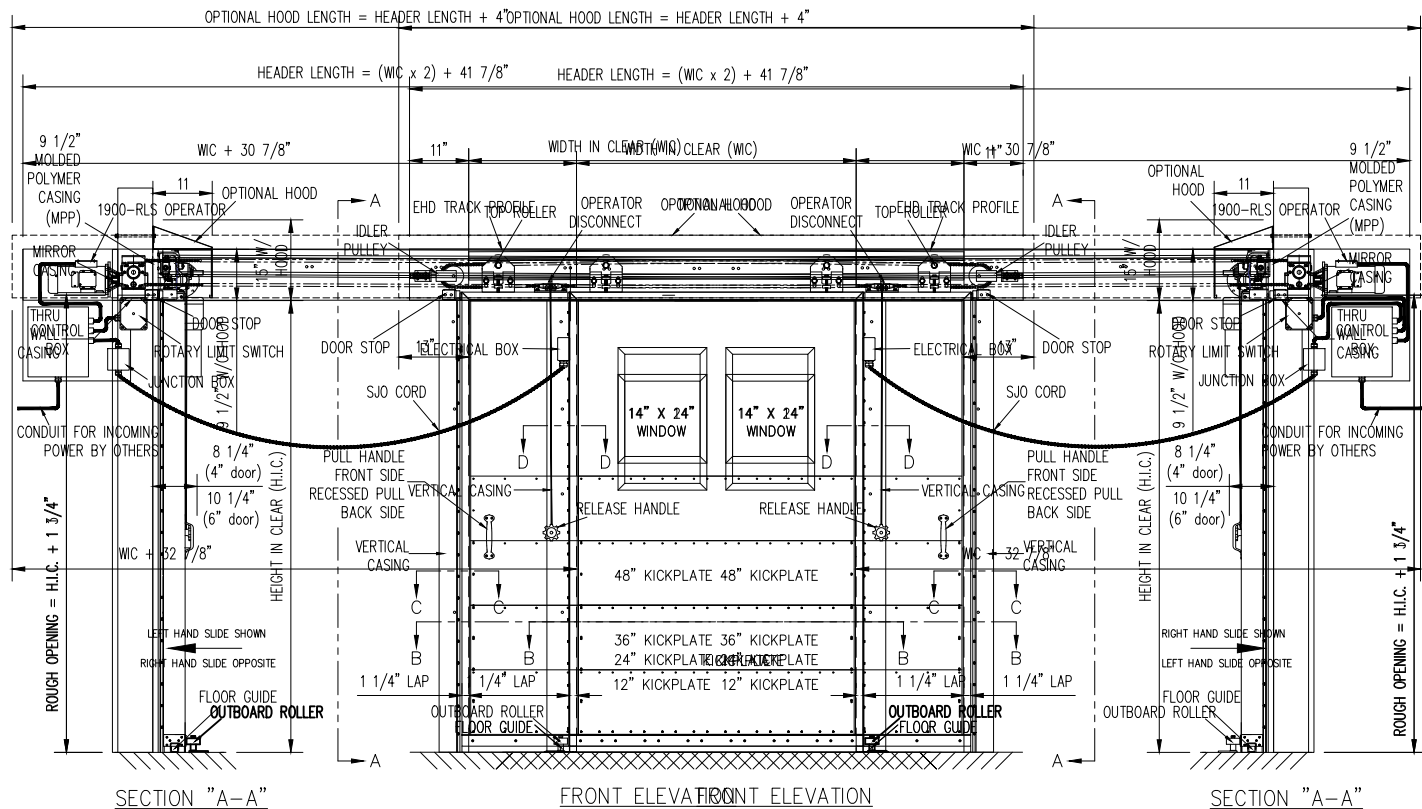
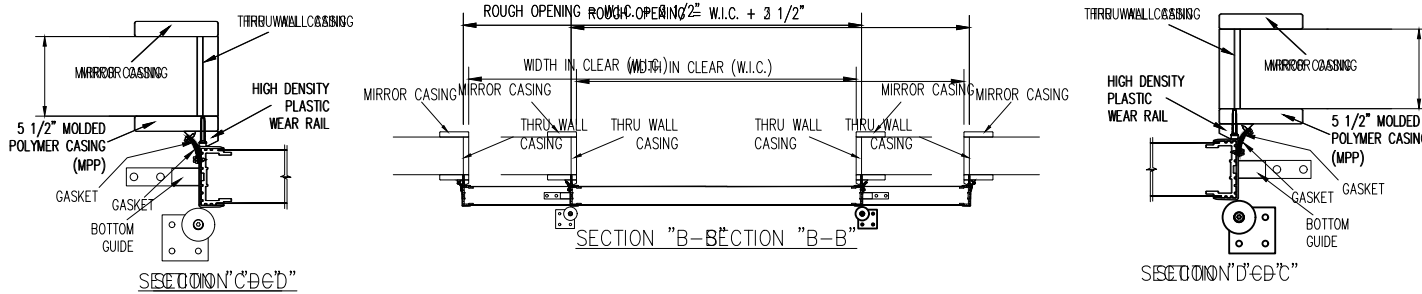
SPECIAL INSTRUCTIONS TO MANUFACTURER:



A SENNECA COMPANY

JOB		CUSTOMER NO:		NO. PRINTS	FOR	DATE	REVISED	
		ORDER NO:						
	SOLD TO		DRAWN BY:					
			SHEET	OF				

ELECTRIC HORIZONTAL SLIDE DOOR with 1900-RLS OPERATOR



SLIDE PLAN



JOB	CUSTOMER NO:		NO. PRINTS	FOR	DATE	REVISED
	ORDER NO:					
SOLD TO	DRAWN BY:					
	SHEET	OF				