

MANUAL HORIZONTAL SLIDE DOOR (STANDARD DUTY)

TYPE & THICKNESS OF DOOR:

COOLER FREEZER 4" THICK 6" THICK

OPENING SIZE:

FINISHED OPENING WIDTH (W.I.C.):
FINISHED OPENING HEIGHT (H.I.C.): WALL THICKNESS:

OPENING DIRECTION:

LEFT (LH) RIGHT (RH)

ENTER ROOM TEMPERATURES:

TEMPERATURE WALL SIDE: F (PLEASE PROVIDE)
TEMPERATURE TRACK SIDE: F (PLEASE PROVIDE)

CLADDING - TRACK SIDE:

EMBOSSED WHITE GALVANIZED.	SMOOTH WHITE GALVANIZED
EMBOSSED BLACK GALVANIZED	SMOOTH GALVALUME
EMBOSSED GALVALUME	SMOOTH WHITE ALUMINUM
EMBOSSED WHITE ALUMINUM	STAINLESS STEEL, #4 FINISH
EMBOSSED MILL ALUMINUM	
CUSTOM	

CLADDING - WALL SIDE:

EMBOSSED WHITE GALVANIZED.	SMOOTH WHITE GALVANIZED
EMBOSSED BLACK GALVANIZED	SMOOTH GALVALUME
EMBOSSED GALVALUME	SMOOTH WHITE ALUMINUM
EMBOSSED WHITE ALUMINUM	STAINLESS STEEL, #4 FINISH
EMBOSSED MILL ALUMINUM	
CUSTOM	

VISION WINDOW:

HEATED NON-HEATED 14" x 14" 14" x 24"

KICK PLATE - TRACK SIDE:

1/16" DIAMOND PLATE	1/8" DIAMOND PLATE	STAINLESS STEEL
12" TALL 24" TALL	36" TALL 48" TALL	Other:

KICK PLATE - WALL SIDE:

1/16" DIAMOND PLATE	STAINLESS STEEL
12" TALL 24" TALL	36" TALL 48" TALL Other:

CASINGS AND HEADER:

TRACK SIDE:

MOLDED PLASTIC POLYMER (MPP)(STD)	METAL CLAD MPP
1" CAREFREE	1.5" CAREFREE

MIRROR SIDE (OPTIONAL):

MOLDED PLASTIC POLYMER (MPP)	METAL CLAD MPP
1" CAREFREE	1.5" CAREFREE

THRU WALL (OPTIONAL):

MOLDED PLASTIC POLYMER (MPP)	METAL CLAD MPP
1" CAREFREE	1.5" CAREFREE

ADDITIONAL OPTIONS:

OUT BOARD ROLLER
LOCK (TRACK SIDE) WITH INSIDE RELEASE
TRACK HOOD STAINLESS POWDER COATED
ELEVATED COOLER/FREEZER FLOOR FLOOR THICKNESS:
JAMB WALL CAPS, NO INSERTS JAMB WALL CAPS WITH INSERTS
OUTER WIDTH: OUTER HEIGHT: INSET:

APPLICATION (REQUIRED):

1. IS THIS DOOR ON A BOX GREATER THAN 3000 SQ FEET YES NO
2. IF NO, IS BOX LOCATED IN COLD STORAGE FACILITY/ATMOSPHERE WITH FLOOR AREA 3000 SQ FEET OR LARGER? (A/C IS NOT COLD STORAGE) YES NO
3. DOES THIS APPLICATION INVOLVE MEDICAL, SCIENTIFIC, OR RESEARCH FACILITIES? YES NO

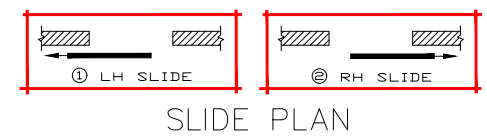
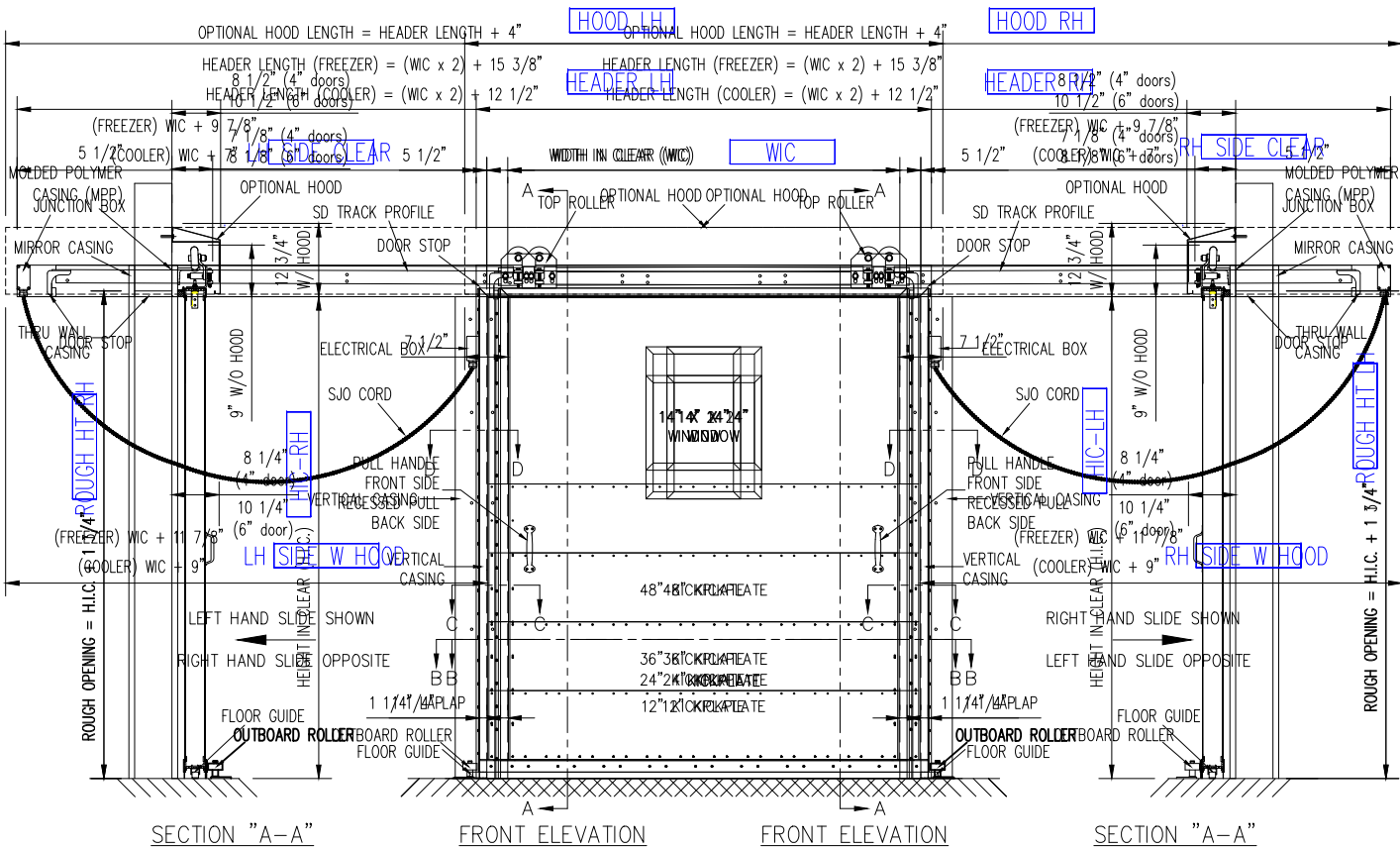
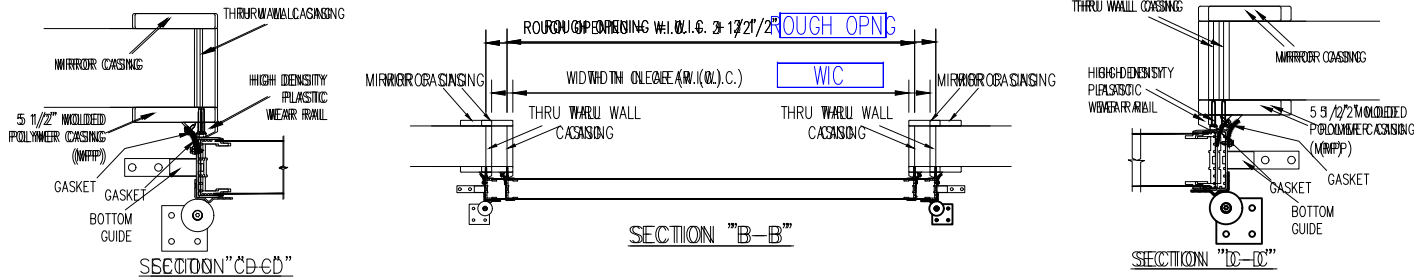
SPECIAL INSTRUCTIONS TO MANUFACTURER:



A SENNECA COMPANY

JOB		CUSTOMER NO:		NO. PRINTS	FOR	DATE	REVISED
		ORDER NO:					
	SOLD TO		DRAWN BY:				
			SHEET	OF			

MANUAL HORIZONTAL SLIDE DOOR (STANDARD DUTY)



JOB	CUSTOMER NO:	NO. PRINTS	FOR	DATE	REVISED
	ORDER NO:				
SOLD TO	DRAWN BY:				
	SHEET OF				