

ELECTRIC VERTICAL LIFT DOOR

TYPE & THICKNESS OF DOOR:

COOLER FREEZER 4" THICK 6" THICK

OPENING SIZE:

FINISHED OPENING WIDTH (W.I.C.):
FINISHED OPENING HEIGHT (H.I.C.): WALL THICKNESS:

ENTER ROOM TEMPERATURES:

TEMPERATURE WALL SIDE: F (PLEASE PROVIDE)
TEMPERATURE TRACK SIDE: F (PLEASE PROVIDE)

CLADDING - TRACK SIDE:

EMBOSSD WHITE GALVANIZED.	SMOOTH WHITE GALVANIZED
EMBOSSD BLACK GALVANIZED	SMOOTH GALVALUME
EMBOSSD GALVALUME	SMOOTH WHITE ALUMINUM
EMBOSSD WHITE ALUMINUM	STAINLESS STEEL, #4 FINISH
EMBOSSD MILL ALUMINUM	
CUSTOM	

CLADDING - WALL SIDE:

EMBOSSD WHITE GALVANIZED.	SMOOTH WHITE GALVANIZED
EMBOSSD BLACK GALVANIZED	SMOOTH GALVALUME
EMBOSSD GALVALUME	SMOOTH WHITE ALUMINUM
EMBOSSD WHITE ALUMINUM	STAINLESS STEEL, #4 FINISH
EMBOSSD MILL ALUMINUM	
CUSTOM	

VISION WINDOW:

HEATED NON-HEATED 14" x 14" 14" x 24"

KICK PLATE - TRACK SIDE:

1/16" DIAMOND PLATE	1/8" DIAMOND PLATE	STAINLESS STEEL
12" TALL 24" TALL	36" TALL 48" TALL	Other:

KICK PLATE - WALL SIDE:

1/16" DIAMOND PLATE	1/8" DIAMOND PLATE	STAINLESS STEEL
12" TALL 24" TALL	36" TALL 48" TALL	Other:

CASINGS AND HEADER:

TRACK SIDE:

MOLDED PLASTIC POLYMER (MPP) METAL CLAD MPP

MIRROR SIDE:

MOLDED PLASTIC POLYMER (MPP) METAL CLAD MPP

THRU WALL:

MOLDED PLASTIC POLYMER (MPP) METAL CLAD MPP
1" CAREFREE 1.5" CAREFREE

COUNTER BALANCE SYSTEM:

WEIGHTS
TORSION SPRINGS

OPERATOR:

INDUSTRIAL DUTY 3/4 HP JACKSHAFT OPERATOR
INDUSTRIAL DUTY 3/4 HP JACKSHAFT OPERATOR, (WATER TIGHT, OIL TIGHT)

VOLTAGE:

115/1/60	230/1/60	208/3/60
230/3/60	460/3/60	575/3/60

CONTROLS:

STEP CONTROL (PULL TO OPEN, PULL TO CLOSE)
TIMER TO CLOSE (PULL TO OPEN, TIME DELAY TO CLOSE)
3-BUTTON CONTROL (OPEN, CLOSE, STOP)

SAFETY DEVICES:

SINGLE SAFETY BEAMS
DUAL SAFETY BEAMS
PRESENCE SENSOR QTY:

ACTUATION:

PULL CORD ON BOTH SIDES
NOTE: HEATED PULL CORD STANDARD FOR FREEZER DOORS.
3-BUTTON STATION, NEMA 1 QTY:
3-BUTTON STATION, NEMA 4 QTY:
RADIO TRANSMITTER AND RECEIVER QTY:
MOTION SENSOR QTY:
BY OTHERS

LOCKING:

LOCK TRACK SIDE
LOCK TRACK SIDE, CYLINDER OPPOSITE, T-HANDLE BOTH SIDES,

ADDITIONAL OPTIONS:

CHAIN HOIST
ELEVATED COOLER/FREEZER FLOOR FLOOR THICKNESS:
JAMB WALL CAPS, NO INSERTS JAMB WALL CAPS WITH INSERTS
OUTER WIDTH: OUTER HEIGHT: INSET:

APPLICATION (REQUIRED):

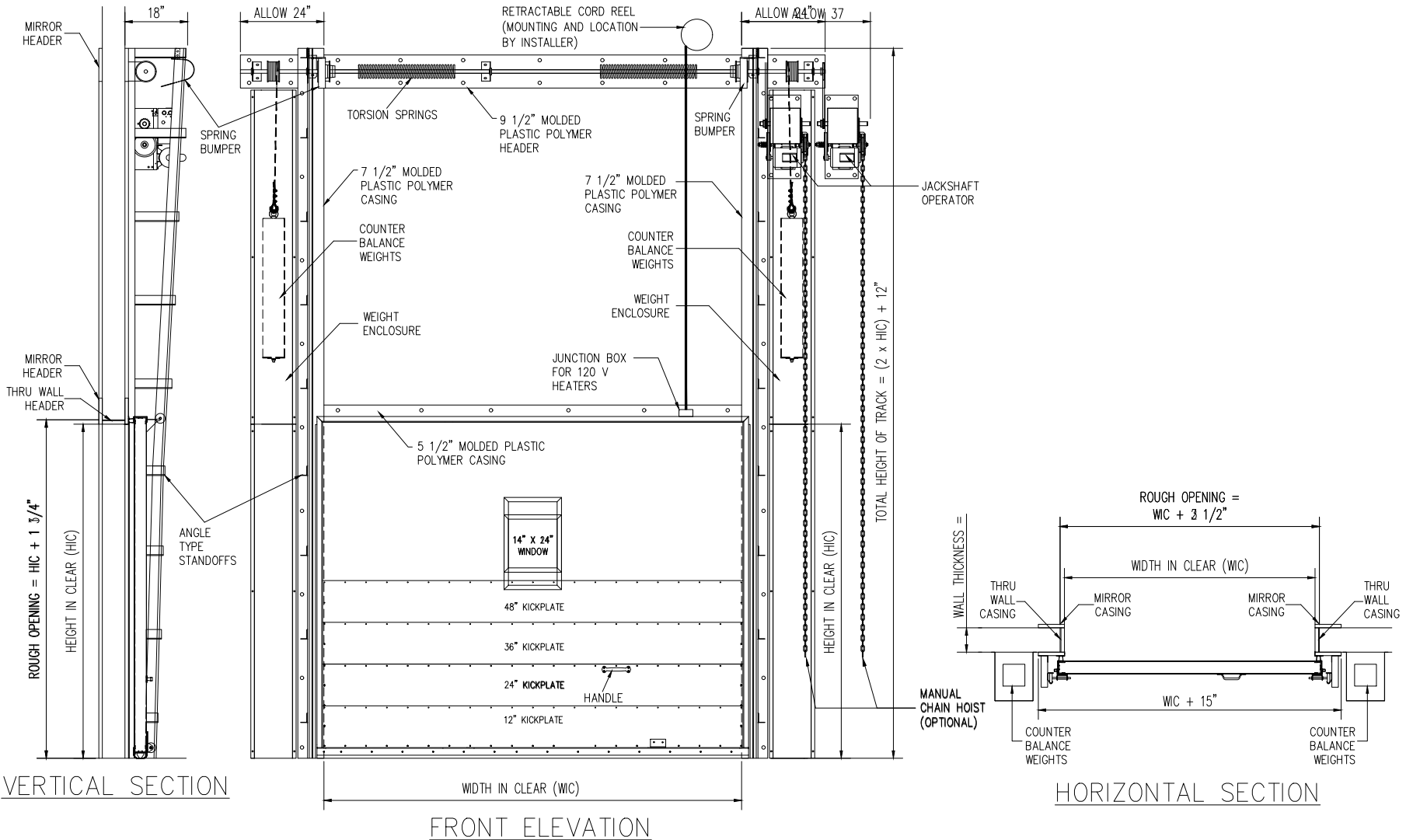
- IS THIS DOOR ON A BOX GREATER THAN 3000 SQ FEET YES NO
- IF NO, IS BOX LOCATED IN COLD STORAGE FACILITY/ATMOSPHERE WITH FLOOR AREA 3000 SQ FEET OR LARGER? (A/C IS NOT COLD STORAGE) YES NO
- DOES THIS APPLICATION INVOLVE MEDICAL, SCIENTIFIC, OR RESEARCH FACILITIES? YES NO

SPECIAL INSTRUCTIONS TO MANUFACTURER:



JOB		CUSTOMER NO:		NO. PRINTS	FOR	DATE	REVISED	
		CHASE ORDER NO:						
	SOLD TO		DRAWN BY:					
			SHEET	OF				

ELECTRIC VERTICAL LIFT DOOR



JOB		CUSTOMER NO:		NO. PRINTS	FOR	DATE	REVISED
			CHASE ORDER NO:				
SOLD TO		DRAWN BY:					
		SHEET	OF				