



## Cold Storage Swing Doors

ColdGuard™

When environmental control is necessary, ColdGuard swing doors provide maximum sealing for any new or replacement applications. Single or double panel ColdGuard doors are suitable for interior and exterior applications and are available with a wide variety of options including panic hardware.

ColdGuard swing doors incorporate a tough and thermally neutral fiberglass reinforced pultrusion (FRP) framework, FRP face casings and Non-CFC foamed-in-place polyurethane core. This innovative design produces a strong and durable door system that will provide years of worry-free service.

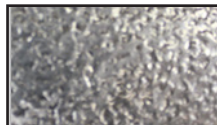
### Material Finishes



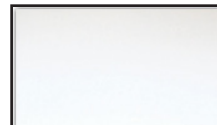
Embossed White  
Galvanized Steel



Embossed White  
Aluminum



Embossed Mil  
Aluminum



Smooth White  
Galvanized



Stainless Steel

# COLDGUARD™

## Cold Storage Swing Doors

### COLD STORAGE DOOR SOLUTIONS

- Magnetic vinyl push-in gaskets are standard on all ColdGuard swing doors. Magnetic gaskets accommodate more “out of square” conditions than traditional compression gaskets and ensure a positive seal.
- Unique design allows Non-CFC foamed-in-place polyurethane insulation to lock in place with the fiberglass reinforced polymer (FRP) producing an extremely durable, insulated panel.
- Heavy duty chrome plated hinges and latch. Nickel plated strap hinges are standard on larger doors.
- Self-lubricating cam lift hinges raise the door when opened, providing reduced friction on floor seal. Door panels are available in 4” and 6” panel thickness.
- Emergency release latch allows the door to be opened from the inside even when padlocked from the outside (shown on following page with glow in the dark option).

11 SV full perimeter heat is standard on freezer doors.

#### ■ PART 1 - GENERAL

1.0 SECTION INCLUDES- Bi-Parting or Single Swing Cold Storage Doors

##### 1.0.1 DESIGN

Door shall be clad with customer’s choice of metal. Door pan and trim shall be constructed of FRP (fiberglass reinforced polymer). All hardware and mechanisms shall be protected against corrosion by galvanizing or other approved method. Doors shall be complete with all components required for complete installation. Doors with provisions for locking shall have safety release hardware on opposite side.

##### 1.0.2 SUBSTITUTIONS

This specification is written with Chase Doors as the basis of acceptable performance.

##### 1.0.3 SUBMITTALS

In compliance with the specification requirements, submit detailed shop drawings for each door, showing in clear detail all mounting requirements and accessories.

##### 1.0.4 QUALITY ASSURANCE

Doors shall be installed in accordance with the architect’s plans and specifications and the door manufacturer’s

written instructions, drawings and recommendations. Doors shall carry a limited warranty against insulation failure for a period of 5 years from date of original installation. Door pan, trim, and door frame shall carry a limited warranty against warping and rotting for a period of 5 years.

#### ■ PART 2 - PRODUCTS

2.0 MANUFACTURER - Bi-Parting or Single Slide Cold Storage Doors to be model ColdGuard by Chase Industries, Inc.(DBA Chase Doors).

##### 2.0.1 MATERIALS

Provide Chase Swing Type Cooler/Freezer Doors including: FRP- door pan clad with customer’s choice of material, 5 1/2” FRP flat frame, foamed-in-place polyurethane core, hinges and latches with a corrosion resistant coating, cam lift gravity hinges, padlocking provision and inside safety release on single point latch, and reinforced push in neoprene gaskets on perimeter of door panel.

#### ■ PART 3 - EXECUTION

##### 3.0.1 INSTALLATION

Doors shall be mounted in full accordance with the detailed instructions of the door manufacturer and contract documents. When mounting the door and the flat frame, mounting surfaces shall be set true and level without distortion and shall be shimmed and caulked to assure tightness and true fitting, and shall be securely lagged. After the doors are hung, they shall be checked for mechanical and electrical operation and tight and uniform gasket sealing. Installation of 115 VAC electric connection to gasket heaters is the responsibility of the electrical contractor.

##### 3.0.2 PRODUCT DELIVERY, STORAGE AND HANDLING

Each cold storage door shall be securely crated so as to protect the door from damage during shipment and handling. Door identification number shall be clearly marked on the outside of each crate.

##### 3.0.3 CLEANING AND ADJUSTMENTS

Clean all doors of excess sealant, grease, stains, fingerprints and construction dust prior to final inspection to the satisfaction of the architect/owner. Adjust all doors to smooth, proper operating condition, including proper sealing and lubrication, prior to turnover of facility to owner.



SENNECA HOLDINGS  
11502 CENTURY BOULEVARD, CINCINNATI, OH 45246  
WWW.SENNECA.COM



HERCULES



HMF EXPRESS



RUBBAIR DOOR



Saino



SIMPLEX



SUBZERO