

**SECTION 'A-A'**



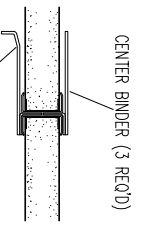
① CENTER PARTING  
SLIDE PLAN

FRAME DETAIL

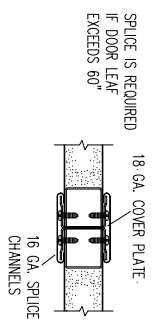
**SAINO SERIES 1011ADA**  
**SAINO SERIES 2011ADA, 250° F. TEMP. RISE**  
MANUAL DOOR WITH WEIGHT CLOSING SYSTEM  
U.L. LABELED DOORS

**NOTES**

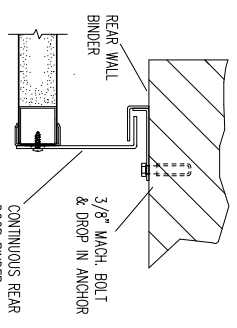
- BINDERS ARE ATTACHED TO WALL WITH 3/8" MACHINE BOLTS & ANCHORS (MASONRY JAMBS)
- PLEASE INDICATE IF WALL IS OTHER THAN MASONRY.
- FOR ALTERNATE CLOSING SYSTEMS, SEE "SHEET 1011ALA1".



**SECTION 'B-B'**



**SECTION 'C-C'**



**SECTION 'D-D'**

TAG MARK	DOOR TYPE	OPENING		SLIDE PLAN		FINISH DOOR		NO. OF PANELS	WALL THICKNESS	FRAME DETAIL	E	WEIGHTS	REEL	CLEARANCE REQ'D		U.L. LABEL	CRUSH PLATES	TRACK-HOOD	WEATHER-STRIPPING	LOCKING SYSTEM	REMARKS	
		WIDTH	HEIGHT	WIDTH	HEIGHT	WIDTH	HEIGHT							OPENING SIDE	HEAD							

**Chase Doors**  
Tel: (800) 543-4455  
www.chasedoors.com  
FAX: (800) 978-6570

JOB		SOLD TO		CUSTOMER NO:		CHASE ORDER NO:		DRAWN BY:		NO. PRINTS		FOR		DATE		REVISED	