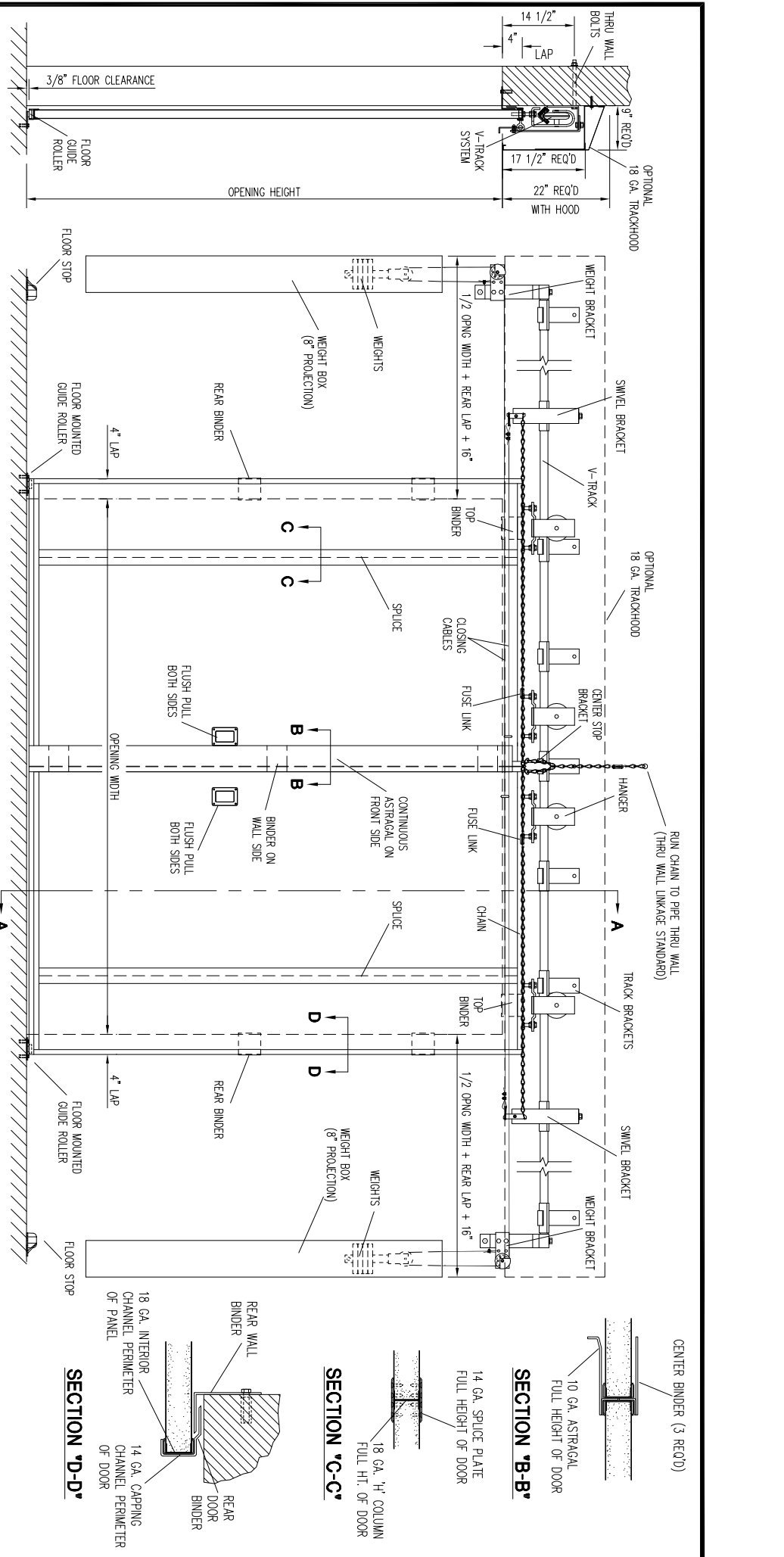
 <p><b>Chase Doors</b></p> <p>Tel: (800) 543-4455 www.chasedoors.com FAX: (800) 978-6570</p>		<p>JOB</p>		<p>CUSTOMER NO:</p>		<p>NO. PRINTS</p>		<p>FOR</p>		<p>DATE</p>		<p>REVISED</p>	
<p>SOLD TO</p>		<p>CHASE ORDER NO:</p>		<p>DRAWN BY:</p>		<p>SHEET ___ OF ___</p>		<p>NO. PRINTS</p>		<p>FOR</p>		<p>DATE</p>	

TAG MARK	DOOR TYPE	OPENING		SLIDE PLAN	FINISH DOOR		NO. OF PANELS	WALL THICKNESS	FRAME DETAIL	E	WEIGHTS	REEL	CLEARANCE REQ'D		U.L. LABEL	CRUSH PLATES	TRACK-HOOD	WEATHER-STRIPPING	LOCKING SYSTEM	REMARKS	
		WIDTH	HEIGHT		WIDTH	HEIGHT							OPENING SIDE	HEAD							



**NOTES**

- BINDERS ARE ATTACHED TO OPENING WITH 3/8" x 1" THROUGHOUTING SCREWS FOR STEEL JAMBS OR 3/8" KIM BOLTS FOR MASONRY JAMBS.
- FOR ALTERNATE CLOSING SYSTEMS, SEE "SHEET 3001ALT".