



Tel: (800) 543-4455  
www.chasedoors.com  
FAX: (800) 978-6570

**Chase Doors**

JOB

CUSTOMER NO:  
CHASE ORDER NO:  
DRAWN BY:

NO. PRINTS

FOR

DATE

REVISED

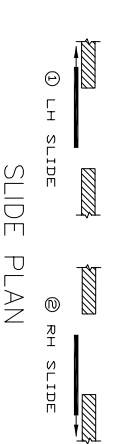
SOLD TO

SHEET \_\_\_\_ OF \_\_\_\_

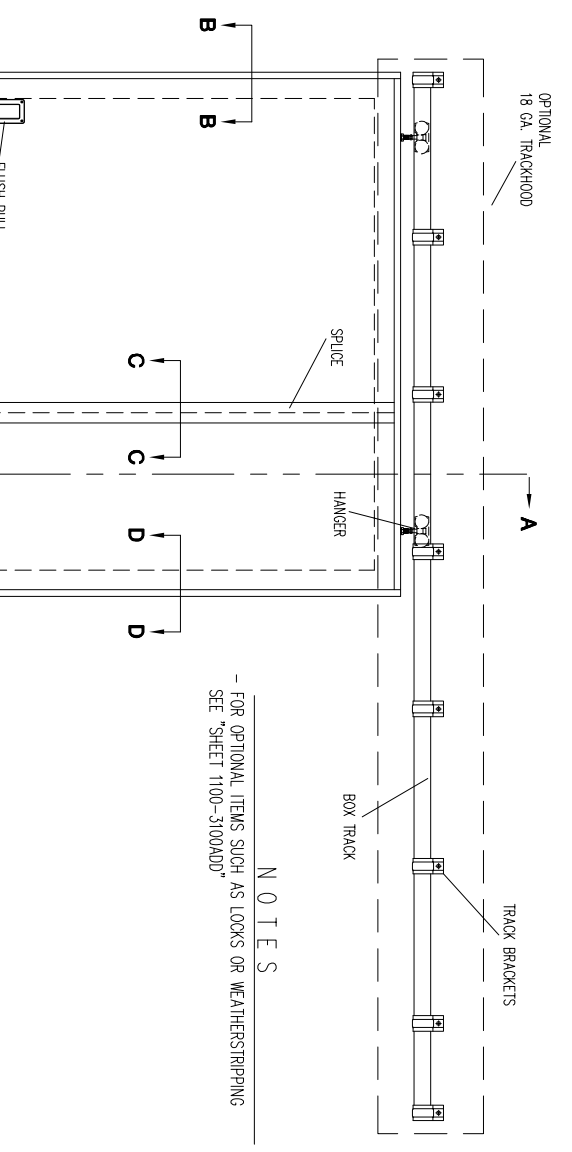
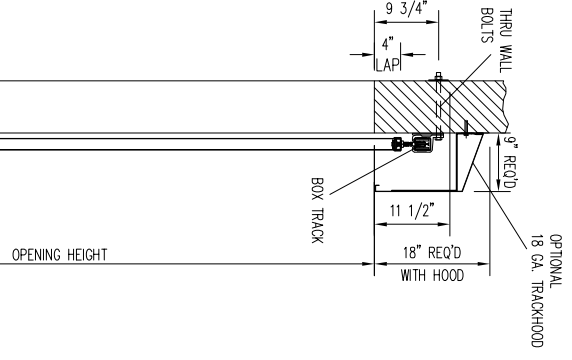
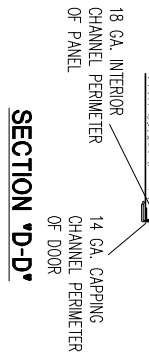
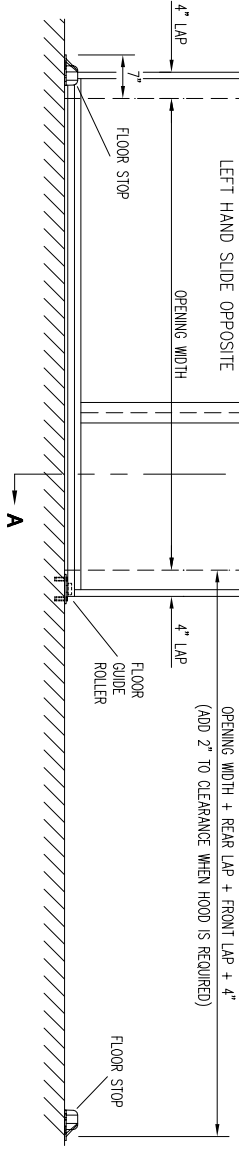
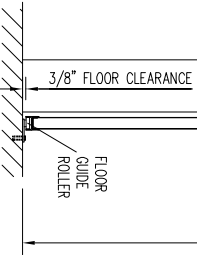
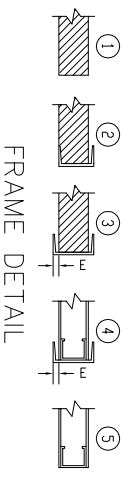
SEE NOTES ABOVE

REMARKS

TAG MARK	DOOR TYPE	OPENING		SLIDE PLAN	FINISH DOOR		NO. OF PANELS	WALL THICKNESS	FRAME DETAIL	E	CLEARANCE REQ'D			TRACK - HOOD	WEATHER-STRIPPING	LOCKING SYSTEM	REMARKS
		WIDTH	HEIGHT		WIDTH	HEIGHT					CLS. SIDE	OPNG. SIDE	HEAD				

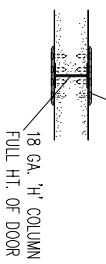


**SAINO SERIES 1100**  
**SAINO SERIES 2100 w/ CALCIUM SILICATE CORE**  
MANUAL, NON-LABELED MODULAR DOORS



NOTES  
- FOR OPTIONAL ITEMS SUCH AS LOCKS OR WEATHERSTRIPPING  
SEE "SHEET 1100-3100ADD"

**SECTION 'C-C'**



**SECTION 'B-B'**

