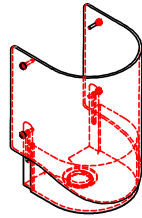
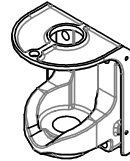


Polyethylene Spring Bumper
 Order By: Curl Size, Height of Bumper,
 Opening Width and Color

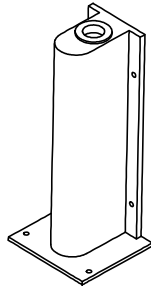
QTY: _____
 Bumper Height: _____
 Opening Width: _____
 Color: _____



R25 UPPER HINGE SEAL
 PART # D14KTHS008 (KIT)
 PART # D14PPHSRAP (Hinge Wrap)
 QTY: _____



UPPER "V-CAM" HINGE ASSEMBLY
 PART # D05AS55290 (STD.)
 QTY: _____
 PART # D05ASRETHO (Hold Open)
 QTY: _____

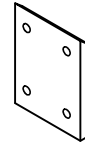


LOWER HINGE GUARD
 PART # D05ASHGRTC (STD Al.)
 QTY: _____
 PART # D05AS9090C (SS)
 QTY: _____



ROLLER ASSEMBLY
 PART # D05AS5508C
 QTY: _____

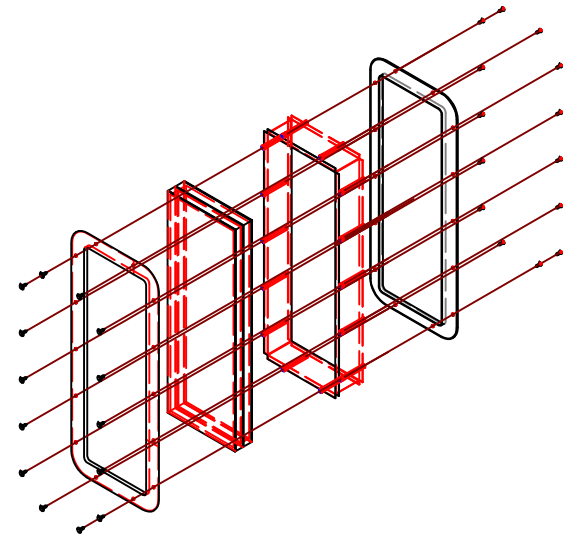
**ROLLER ASSEMBLY w/
 Stainless Steel Bearing**
 PART # D05AS5508S
 QTY: _____



ABS V-CAM SHIM (1/4")
 PART # D14PPVCS01
 QTY: _____

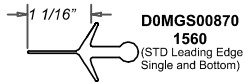


ABS LHG SHIM (1/4")
 PART # D14PPHGS02
 QTY: _____

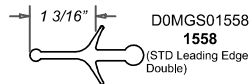


ABS Frame (2), Triple Pane Insert & Fasteners

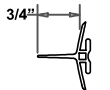
Size	Part Number	Qty
8" x 14"	D14KT30814	
8" x 30"	D14KT30830	
10" x 30"	D14KT31030	
12" x 18"	D14KT31218	
16" x 16"	D14KT31616	



D0MGS00870
1560
 (STD Leading Edge
 Single and Bottom)



D0MGS01558
1558
 (STD Leading Edge
 Double)



D05GS16779
1677
 (STD Back Edge)



D0NASSTD5W
1557
 (Lower Hinge Sweep)

R25 GASKETS

R25 GASKETS
 90° X 90° Hardware Only

Part Number	Durus #	Qty
D0MGS00870	1560	
D0MGS01558	1558	
D05GS16779	1677	
D0NASSTD5W	1557	

TOP SEAL
 OPENING WIDTH: _____
 SPACE BETWEEN HEADER
 & TOP OF DOOR: _____
 QTY: _____
 DURUS PART # 1520 (Std. 2")
 DURUS PART # 1520E (> 2")

DURULITE RETAILER R25
 90° X 90° Hardware Only

PART REPLACEMENT ORDER FORM

Chase Doors
 World's Leading Manufacturer Of Traffic Doors
 Cincinnati, OH and Redmond, OR
 Phone Toll Free: 1-800-543-4455
 E-Mail: csred@chasedoors.com