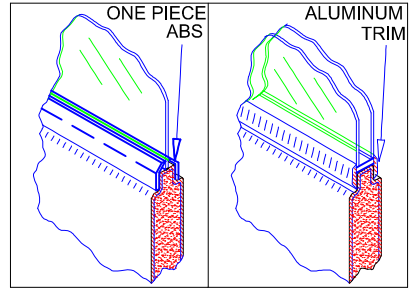
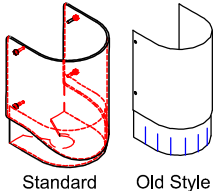


Backer Plate QTY: _____
 D0MHW02556
 D0MHW02557 (Extended)

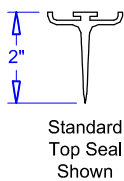


Upper Hinge Seal
 QTY: _____

- D0MKTHSDUR* (Std. Kit)
 - D0MPPHSRAP (Std.)
 - D0MPPHSEXT (Extended)
 - D0MGS0014 (Old Style)
- *Includes Hinge Seal, Ring Bushing, Riser and Fasteners



Top Seal
 1520 (Std. 2" Gap)
 1520E (Greater than 2" Gap)
 QTY: _____
 Gap: _____
 Opening Width: _____



SINGLE PANE DOUBLE PANE

SINGLE PANE WINDOW KITS

1/8" Poly, One Piece ABS Frame (2) and Fasteners (Single Pane Only)

Size	Part Number	Panel Width	Qty
10" x 22"	D0MAS1022P	24" & 27"	
14" x 22"	D0MAS1422P	30"	
16" x 22"	D0MAS1622P	32"	
18" x 22"	D0MAS1822P	34"	
20" x 22"	D0MAS2022P	36" to 48"	
22" x 22"	D0MAS2222P	54" & 60"	

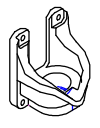
Roller Assembly

- D0MASC5508 (STD)
- D0MAS5508S (SS)



V-Cam

- D00AS5561C (STD)
- D04AS55091 (SS)
- D00ASVCCHO (AL. HO)
- D04ASVCSHO (SS HO)
- D00AS14021 (SS LoRise)



DOUBLE PANE WINDOW KITS

Sealed Double Pane Unit, Eight Piece Aluminum Frame & Fasteners

Size	Part Number	Panel Width	Qty
10" x 22"	D0MKT24SDP	24" & 27"	
14" x 22"	D0MKT30SDP	30"	
16" x 22"	D0MKT32SDP	32"	
18" x 22"	D0MKT34SDP	34"	
20" x 22"	D0MKT36SDP	36" to 48"	
22" x 22"	D0MKT54SDP	54" & 60"	

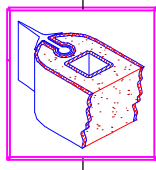
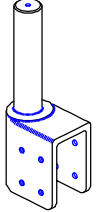
ADA APPROVED WINDOW KITS

1/4" Poly, ABS Frame (2) & Fasteners (Single Pane Only)

Size	Part Number	Panel Width	Qty
12" x 30" ADA	D0MKT1230A	24" & 27"	
16" x 30" ADA	D0MKT1630A	30"	
20" x 30" ADA	D0MKT2030A	32" & 34"	
24" x 30" ADA	D0MKT2430A	36" to 60"	

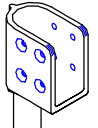
Upper Hinge Adapter

- D0OCS55101 (STD)
- D04SS55101 (SS)



Lower Hinge Adapter

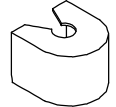
- D0OCS55501 (STD)
- D04SS55501 (SS)



Internal Threads to Accept
 Optional Spring Assist
 (Part # 5543, Consult Factory)

Solid Riser

- D0MPPSRISR QTY: _____



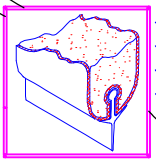
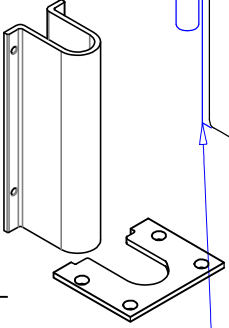
Pillow Block

- D00AS5555C (STD)
- D0MSS5555S (SS)



8.5" Standard Hinge Guard

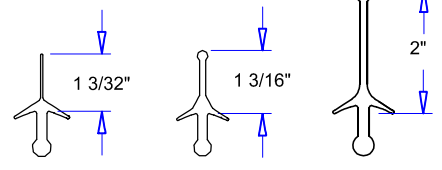
- D0MAL05518 (Alum.)
- D0MPP0LHGS (Poly)
- D0MSSLHGSS (SS)
- D0MALLHLHG (Hussman/Combo) (Not Pictured)
- D0MALSBASE (Detachable Base Plate) QTY: _____
- D0MFS00033 (Anchors) QTY: _____



Gaskets

QTY: _____ LENGTH: _____

- D0MGS00870
- D0MGS00686
- D0MGS00719



1560 (Std. Leading Edge Single, Std. Back & Bottom)
 1558 (Std. Leading Edge Double)
 1535 (Leading Edge Double Large Openings)

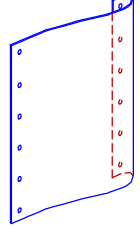
Polyethylene Spring Bumper

Order By: Curl Size, Height of Bumper, Opening Width and Color

Example: 3" Curl, 36" High, 48" Wide Opening, Black

- 3" Curl 24" to 36" Panels
- 4" Curl 39" to 60" Panels

QTY: _____
 Bumper Height: _____
 Opening Width: _____
 Color: _____



Lower Hinge Sweep
 QTY: _____

- D0NASSTDSW

DURULITE STANDARD DOOR
90° X 90° Hardware