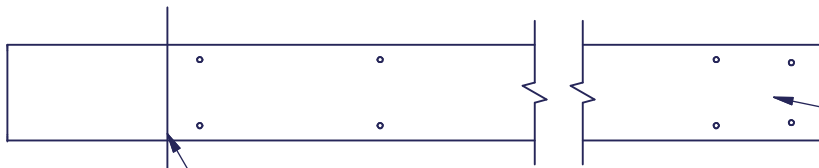


2

1

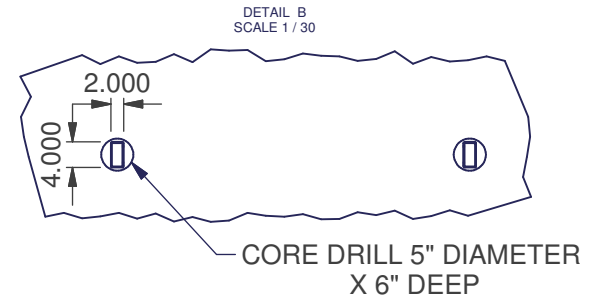
REVISION HISTORY				
REV	DATE	DESCRIPTION	BY	AP
1			bclark	

OLD PART NO.		A	REV.	
--------------	--	---	------	--



THE TUBES WILL BE EMBEDDED 6" INTO THE CORE DRILLED HOLES, IN THE FLOOR

THIS HOLE PATTERN WILL BE AT THE TOP OF THE TUBING, WHEN INSTALLED.



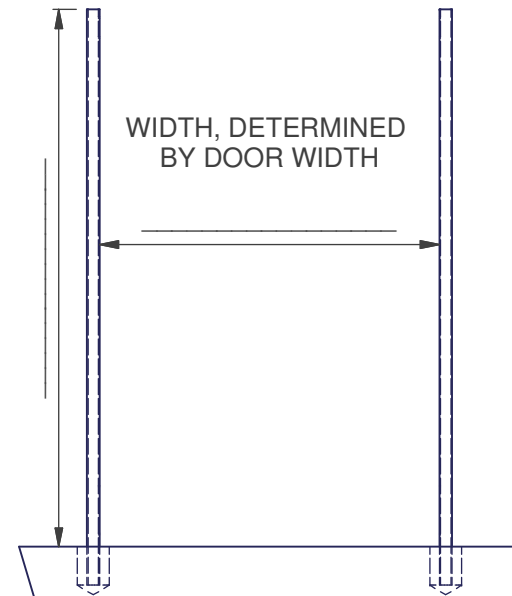
INSTALLATION OF FRAME TUBING

- 1) DETERMINE THE SIZE OF THE RETAILER DOORS, THAT HAVE BEEN ORDERED. THIS IS NOT THE SAME AS THE ROUGH OPENING SPECIFIED FOR THE FRAME. AS AN EXAMPLE, LET'S SAY THAT THE DOORS ARE FOR A 60" X 84" OPENING. THIS MEANS THAT, AFTER INSTALLED, THE TUBES WILL BE 60" APART, FACE TO FACE, WITH THE TOPS OF THE TUBING BEING LEVEL, AT 84" FROM THE FLOOR. THE HEIGHT OF THE TUBE, OUT OF THE FLOOR, IS CRITICAL, SO THE LOWER HINGE CAN BE INSTALLED PROPERLY. ALSO, THE LOWEST HOLES IN THE TUBE SHOULD BE CENTERED 2" FROM THE FINISHED FLOOR. IF THE DOOR SIZE IS DETERMINED, BEFORE SHIPPING, WE WILL INCLUDE IT IN THE VIEW DIRECTLY TO THE RIGHT.
- 2) CORE DRILL TWO 5" DIAMETER HOLES, 6" DEEP, 2" FARTHER APART THAN THE OPENING WIDTH REQUIRED, CENTER TO CENTER. USING THE EXAMPLE ABOVE, THE HOLES WILL BE 62", CENTER TO CENTER.
- 3) INSTALL TUBES, PLUMB, LEVEL AND SQUARE, WITH THE FACES WITH THE BOLT PATTERNS FACING INWARD, TOWARD EACH OTHER. TUBING FACES SHOULD BE PARALLEL. IN THE CASE OF A SINGLE PANEL DOOR, THERE WILL BE ONE TUBE WITH A BOLT PATTERN, AND ONE WITHOUT HOLES. IF A RIGHT HAND IS REQUIRED, PLACE THE TUBE WITH HOLES ON THE RIGHT SIDE OF THE OPENING, LOOKING FROM THE SALES FLOOR. BRACE TUBES, TO PREVENT MOVEMENT.
- 4) APPLY CONCRETE TO THE CORE DRILLED HOLES, KEEPING IT LEVEL, AND NOT MOUNDED UP.
- 5) AFTER SUFFICIENT TIME, INSTALL THE CHASE RETAILER DOORS USING THE

NOTES: INSTRUCTIONS PROVIDED WITH THE DOORS.

1. All dimensions are in inches unless otherwise noted.
2. Deburr and break all sharp edges.

HEIGHT, DETERMINED BY DOOR HEIGHT



B

B

A

A

UNLESS OTHERWISE SPECIFIED				MATERIAL:		
TOLERANCE MACHINED SURFACES						
RADII	FRACTIONS	DECIMALS	ANGLES			
	$\pm \frac{1}{64}$.XX $\pm .015$.XXX $\pm .005$	$\pm 1^\circ$	FINISH:		
THIS DRAWING FURNISHED FOR ENGINEERING INFORMATION AND REFERENCE ONLY AND DOES NOT CONVEY ANY REPRODUCTION OR MANUFACTURING RIGHTS				SUPERSEDES	INTERCHANGEABLE	
				USED ON	SUPERSEDED BY	WEIGHT
					INTERCHANGEABLE	

Chase Doors

NAME: _____

DR: _____ SCALE: _____ nts

CK: _____ PART NO.: _____ RETAILER POST INSTALLATION INSTRUCTIONS

DATE: 9/8/2011 **A** _____ REV. _____

2

1