

PREPARATION

MEASURE WIDTH AND HEIGHT OF FRAMED OPENING AND COMPARE WITH OTHER DIMENSIONS.

FRAMED OPENING DIMENSIONS MUST MEET ORDER DIMENSIONS WITHIN THE FOLLOWING TOLERANCES;

SINGLE DOORS: HEIGHT: $\pm 1/4"$
WIDTH: $\pm 1/4"$

DOUBLE DOORS: HEIGHT: $\pm 1/4"$
WIDTH: $\pm 1/4"$

IF THE FRAMED OPENING DOES NOT MEET THE ORDER DIMENSIONS WITHIN THESE TOLERANCES CALL THE FACTORY AT 1-800-547-6856

FOR PROPER INSTALLATION

FRAMED OPENINGS MUST BE SQUARE AND PLUMB. MAKE ANY NECESSARY ADJUSTMENTS TO SQUARE AND PLUMB OPENING. DURULITE DOORS MUST BE INSTALLED PLUMB.

DRILL BIT SIZES

FOR: ② ③

FOR STEEL JAMBS
USE: 7/32" DRILL BIT.

FOR WOOD JAMBS 3/8"
USE: 13/64" DRILL BIT.

3/16" DRILL BIT IS REQUIRED FOR THE ROLL PIN INSTALLATION AND IS INCLUDED WITH YOUR HARDWARE PACKAGE

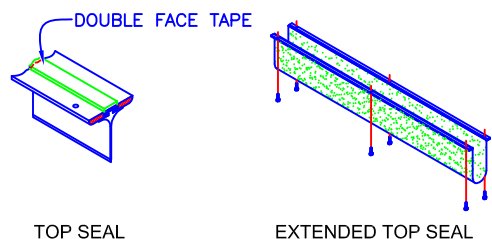
FASTENERS

FOR: ② ③

FOR STEEL JAMB
USE: 1/4"-14 X 1-1/2" TEK SCREWS

FOR WOOD JAMB
USE: 1/4" X 3" WOOD SCREWS

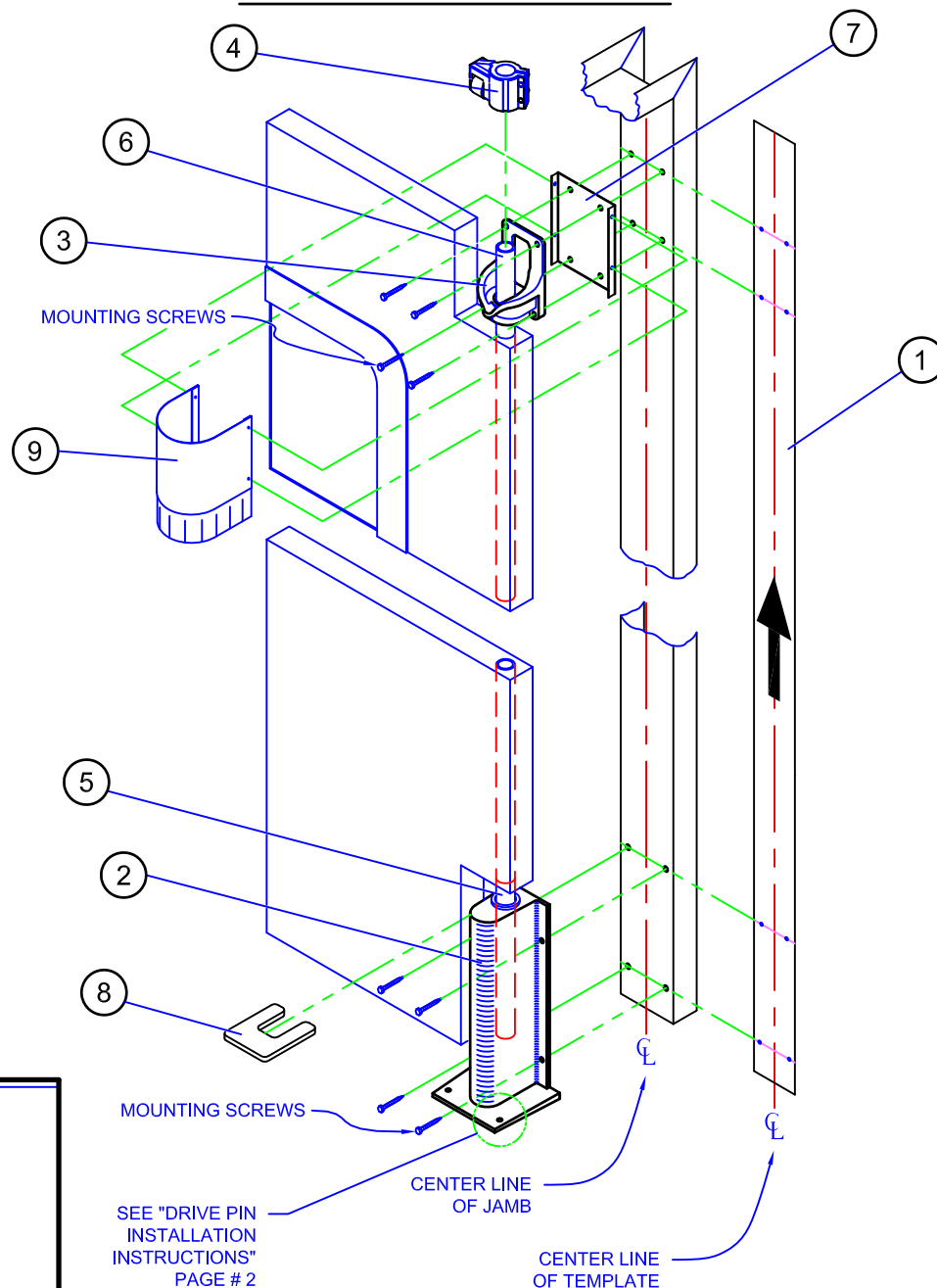
TOP SEALS



RETAILER INSTALLATION INSTRUCTIONS

for EXTENDED GAP ONLY!

PAGE 1



STEP 1. MARKING AND DRILLING JAMB FOR HARDWARE.

NOTE: PROCEED ONLY AFTER COMPLETING THE "PREPARATION" SECTION AT LEFT.

ESTABLISH THE CENTERLINE OF JAMB. PLACE TEMPLATE ① ON THE INSIDE FACE OF JAMB WITH BOTTOM OF TEMPLATE TOUCHING FINISHED FLOOR OR SILL. LINE UP CENTERLINE ON TEMPLATE WITH CENTERLINE OF JAMB.

MARK HOLES THROUGH TEMPLATE ① ONTO JAMB WITH CENTER PUNCH. **NOTE:** SEE "DIM A" FROM "HARDWARE LOCATION" SECTION, PAGE 2, FOR YOUR APPLICATION.

REMOVE TEMPLATE ① FROM JAMB AND DRILL HOLES (SEE "DRILL BIT SIZES" AT LEFT).

STEP 2. ATTACHING HARDWARE AND HANGING DOOR.

NOTE: IF YOU HAVE A LOW CEILING OR WIDE JAMB, IT MAY BE NECESSARY TO INSERT THE LOWER HINGE POST ⑤ INTO THE LOWER HINGE GUARD ② BEFORE PROCEEDING.

ATTACH LOWER HINGE GUARD ② TO JAMB WITH APPROPRIATE FASTENERS.

PLACE V-CAM ③ AND ROLLER ASSEMBLY ④ (AS SHOWN AT LEFT) ON THE UPPER HINGE POST ⑥ (DO NOT TIGHTEN ROLLER ASSEMBLY AT THIS TIME).

LIFT DOOR AND INSERT THE LOWER HINGE POST ⑤ INTO THE LOWER HINGE GUARD ② (SEE NOTE ABOVE). PLACE SPACER SHIM ⑧ BETWEEN THE LOWER NOTCH ON DOOR AND THE LOWER HINGE GUARD ②.

PLACE THE BACKER PLATE ⑦ BEHIND THE V-CAM ③ (MAKE SURE ALL HOLES LINE UP), FASTEN TO JAMB, USING APPROPRIATE FASTENERS, AND TIGHTEN.

IMPORTANT NOTE: ALIGN TOP OF DOOR WITH FRAME HEADER.

SEAT ROLLER BEARING OF THE ROLLER ASSEMBLY ④ INTO THE LOWEST POSSIBLE POSITION IN THE V-CAM ③ AND TIGHTEN UPPER "ALLEN HEAD" CAP SCREW (SEE DETAIL "A-1").

REMOVE SPACER SHIM ⑧, MAKING SURE THAT THE ROLLER ASSEMBLY ④ DOES NOT SLIP ON THE UPPER HINGE POST ⑥. **CAREFULLY** SWING DOOR TO A POSITION THAT WILL ALLOW YOU TO TIGHTEN THE LOWER "ALLEN HEAD" CAP SCREW. TIGHTEN LOWER CAP SCREW (SEE IMPORTANT NOTE ABOVE).

STEP 3. ROLL PIN INSTALLATION (See WARNING Below)

WARNING: FAILURE TO INSTALL ROLL PIN AS INSTRUCTED IN STEP 3 WILL VOID ANY AND ALL WARRANTIES ATTACHED TO THIS PRODUCT!!!

LOCATE CENTER PUNCH MARK ON ROLLER ASSEMBLY ④. MAKE SURE DOOR IS PROPERLY ALIGNED IN OPENING BEFORE PROCEEDING (SEE IMPORTANT NOTE BELOW). DRILL A 3/16" HOLE COMPLETELY THROUGH THE UPPER HINGE POST ⑥ AND ROLLER ASSEMBLY ④ (SEE DETAIL "A-1" BELOW).

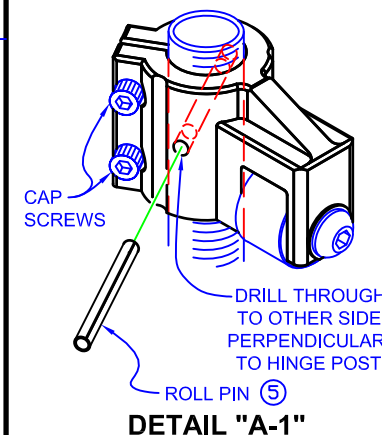
IMPORTANT NOTE: PINNING THE ROLLER ASSEMBLY ④ TO THE UPPER HINGE POST ⑥ WILL PERMANENTLY FIX THE LOCATION OF THE DOORS IN THEIR OPERATIONAL ARC. **THE DOORS MUST BE IN EXACT ADJUSTMENT PRIOR TO DRILLING.**

STEP 4. TOP & HINGE SEALS

PEEL PAPER FROM DOUBLE FACE TAPE ON UPPER HINGE SEAL ⑨. PLACE OVER BACKER PLATE ⑦ (SKIRT SIDE DOWN), ATTACH WITH #10 TEK SCREWS, PROVIDED.

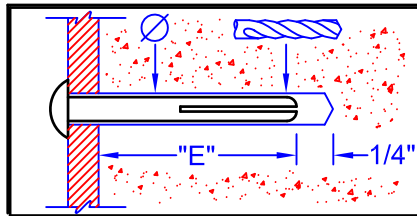
REMOVE PAPER FROM DOUBLE FACE TAPE ON TOP SEAL (SEE DRAWING AT FAR LEFT). POSITION TOP SEAL WITH BLADE CENTERED OVER DOORS WHILE IN THE CLOSED POSITION. TEMPORARILY ATTACH TOP SEAL TO HEADER WITH THE DOUBLE FACE TAPE. CHECK THE POSITION OF THE TOP SEAL WITH THE DOORS CLOSED. ADJUST IF NECESSARY. ATTACH TOP SEAL TO HEADER WITH FASTENERS PROVIDED.

NOTE: CHECK DOOR AT FULL SWING IN BOTH DIRECTIONS, IT MAY BE NECESSARY TO TRIM GASKET MATERIAL IN SOME AREAS.



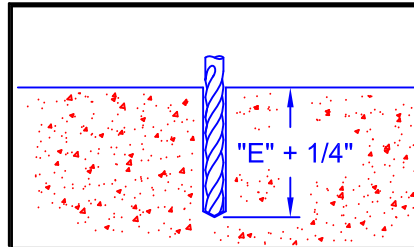
RETAILER INSTALLATION INSTRUCTIONS

DRIVE PIN INSTALLATION INSTRUCTIONS



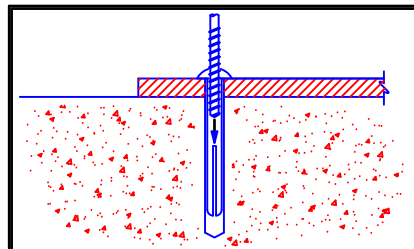
\varnothing		E
1/4"	1/4"	DIM "E"

STEP 1)



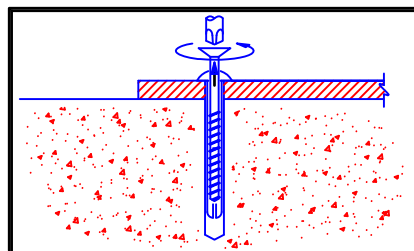
USING THE PROPER DIAMETER **ANSI** BIT, DRILL A HOLE INTO THE BASE MATERIAL TO A MINIMUM DEPTH OF 1/4" DEEPER THAN THE EMBEDMENT. BLOW THE HOLE CLEAN OF DUST AND OTHER MATERIAL.

STEP 2)



INSERT THE ANCHOR THROUGH THE LOWER HINGE GUARD BASE. DRIVE THE SCREW INTO THE ANCHOR BODY TO EXPAND IT. BE SURE THE HEAD IS SEATED FIRMLY AGAINST THE BASE AND THAT THE ANCHOR IS AT THE PROPER EMBEDMENT.

STEP 3)

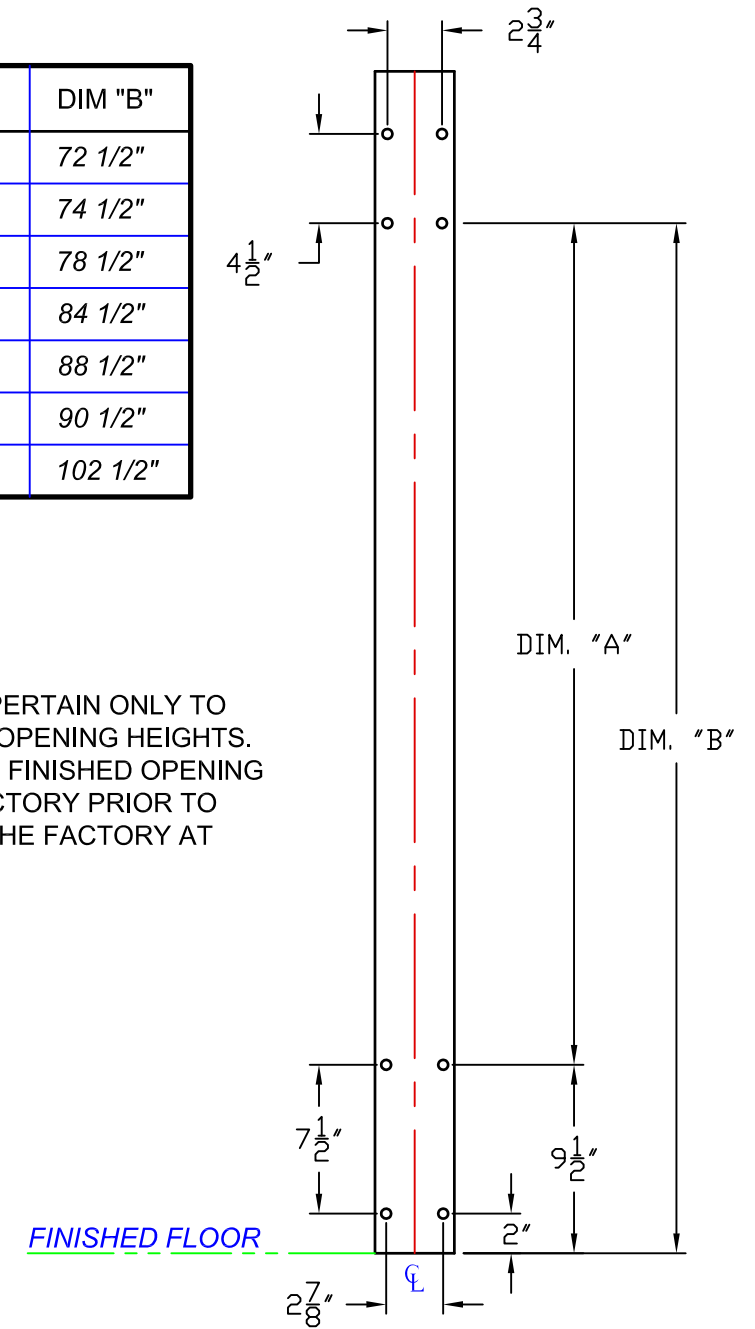


TO REMOVE: PRESS A No. 2 SCREWDRIVER FIRMLY INTO THE SCREW HEAD AND TURN COUNTER CLOCKWISE. PRY THE SCREW FROM THE ANCHOR BODY, THEN PRY OUT THE FIXTURE AND ANCHOR BODY.

HARDWARE LOCATION

OPENING HEIGHT	ACTUAL DOOR HEIGHT	DIM "A"	DIM "B"
78"	75"	63"	72 1/2"
80"	77"	65"	74 1/2"
84"	81"	69"	78 1/2"
90"	87"	75"	84 1/2"
94"	91"	79"	88 1/2"
96"	93"	81"	90 1/2"
108"	105"	93"	102 1/2"

NOTE: DIMENSIONS LISTED PERTAIN ONLY TO STANDARD FINISHED OPENING HEIGHTS. PLEASE VERIFY YOUR FINISHED OPENING HEIGHT WITH THE FACTORY PRIOR TO DRILLING. CONTACT THE FACTORY AT 1-800-547-6856.



IMPORTANT: DIMENSIONS SHOWN ARE MEASURED UP FROM THE FINISHED FLOOR LINE.