

Structural Tube Frames, C Channel Frames, and Flush Hollow Metal Frames



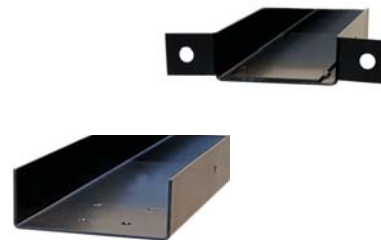
Structural Tube Frames

Structural tube frames are custom manufactured of tubular steel to fit your particular door opening. Designed for heavy doors in industrial type of applications or applications where the wall can not support the door. They are shipped knocked-down in three easy to assemble pieces. The vertical members are placed on the floor, the header section slides into the position, and mechanically fastens to the vertical sections with four bolts. The frame is raised into the rough opening and simply anchored to the floor (two anchors per side) and the jamb. Chase structural tube frames are available for standard and industrial applications and are pre-drilled for any of our hardware configurations so installation is quick and easy. Just supply us with your finished opening height and width. Standard color is powder coated gray, optional powder coated black, beige or white. Stainless steel and galvanized wraps are also available.



C-Channel Frames

C-Channel frames are custom manufactured for each opening in opening size, as well as wall thickness. C-Channel frames are manufactured of carbon steel, and are powder coated for corrosion resistance. When structural reinforcement is not required, C-Channel frames are cost effective option for traffic doors. C-Channel frames ship in three pieces, and are mechanically fastened to the wall on all sides. The header assembly includes internal reinforcement plates that fasten to the side members when the door is installed. As with our Structural Tube Frames, C-Channel frames are pre-drilled for installation of any Chase traffic door. This insures that the door is properly mounted, and reduces the labor to complete the door and frame installation. Standard finish on C-Channel Frames is powder coated gray. Optional black, beige and white finishes are available, as well as galvanized and stainless steel finishes.



Flush Hollow Metal Frames

Chase Flush Hollow Metal Frames are an excellent choice for traffic door installations with light to medium traffic. Flush hollow metal frames are best suited for drywall constructed walls, but can also be used in block walls. All Chase flush hollow metal frames have internal steel reinforcement for installation of traffic door hardware. Chase flush hollow metal frames ship knock-down, and are easily assembled on site for quick installation. Frames can be butt mounted on block, or wrapped onto drywall constructed walls. Chase flush hollow metal frames ship prime painted or factory galvanized, and are finish painted after installation. Flush hollow frames are a cost effective option for light to medium abuse applications.

