

**TYPE & THICKNESS OF DOOR:**

COOLER                      FREEZER                      4" THICK                      6" THICK

**OPENING SIZE:**

FINISHED OPENING WIDTH (W.I.C.):  
 FINISHED OPENING HEIGHT (H.I.C.):                      WALL THICKNESS:

**ENTER ROOM TEMPERATURES:**

TEMPERATURE INSIDE BOX:                      F (PLEASE PROVIDE)  
 TEMPERATURE OUTSIDE BOX:                      F (PLEASE PROVIDE)

**CLADDING - FRONT SIDE:**

|                             |                            |
|-----------------------------|----------------------------|
| EMBOSSSED WHITE GALVANIZED. | SMOOTH WHITE GALVANIZED    |
| EMBOSSSED BLACK GALVANIZED  | SMOOTH GALVALUME           |
| EMBOSSSED GALVALUME         | SMOOTH WHITE ALUMINUM      |
| EMBOSSSED WHITE ALUMINUM    | STAINLESS STEEL, #4 FINISH |
| EMBOSSSED MILL ALUMINUM     |                            |
| CUSTOM                      |                            |

**CLADDING - BACK SIDE:**

|                             |                            |
|-----------------------------|----------------------------|
| EMBOSSSED WHITE GALVANIZED. | SMOOTH WHITE GALVANIZED    |
| EMBOSSSED BLACK GALVANIZED  | SMOOTH GALVALUME           |
| EMBOSSSED GALVALUME         | SMOOTH WHITE ALUMINUM      |
| EMBOSSSED WHITE ALUMINUM    | STAINLESS STEEL, #4 FINISH |
| EMBOSSSED MILL ALUMINUM     |                            |
| CUSTOM                      |                            |

**VISION WINDOW:**

HEATED                      NON-HEATED                      14" x 14"                      14" x 24"

**EXTERIOR (TRACK SIDE) KICK PLATE:**

|                     |                    |  |
|---------------------|--------------------|--|
| 1/16" DIAMOND PLATE | 1/8" DIAMOND PLATE | STAINLESS STEEL  |
| 12" TALL            | 24" TALL           | 36" TALL                      48" TALL                      Other: |

**INTERIOR (WALL SIDE) KICK PLATE:**

|                     |                    |  |
|---------------------|--------------------|--|
| 1/16" DIAMOND PLATE | 1/8" DIAMOND PLATE | STAINLESS STEEL  |
| 12" TALL            | 24" TALL           | 36" TALL                      48" TALL                      Other: |

**CASINGS AND HEADER:**

**TRACK SIDE:**  
 MOLDED PLASTIC POLYMER (MPP)(STD)                      METAL CLAD MPP  
**MIRROR SIDE (OPTIONAL):**  
 MOLDED PLASTIC POLYMER (MPP)                      METAL CLAD MPP  
**THRU WALL (OPTIONAL):**  
 MOLDED PLASTIC POLYMER (MPP)                      METAL CLAD MPP

**ADDITIONAL OPTIONS:**

INSIDE SAFETY LOCK WITH RELEASE  
 TRACK HOOD                      STAINLESS                      POWDER COATED  
 ELEVATED COOLER/FREEZER FLOOR                      FLOOR THICKNESS:  
 JAMB WALL CAPS, NO INSERTS                      JAMB WALL CAPS WITH INSERTS  
 OUTER WIDTH:                      OUTER HEIGHT:                      INSET:

**SPECIAL INSTRUCTIONS TO MANUFACTURER:**



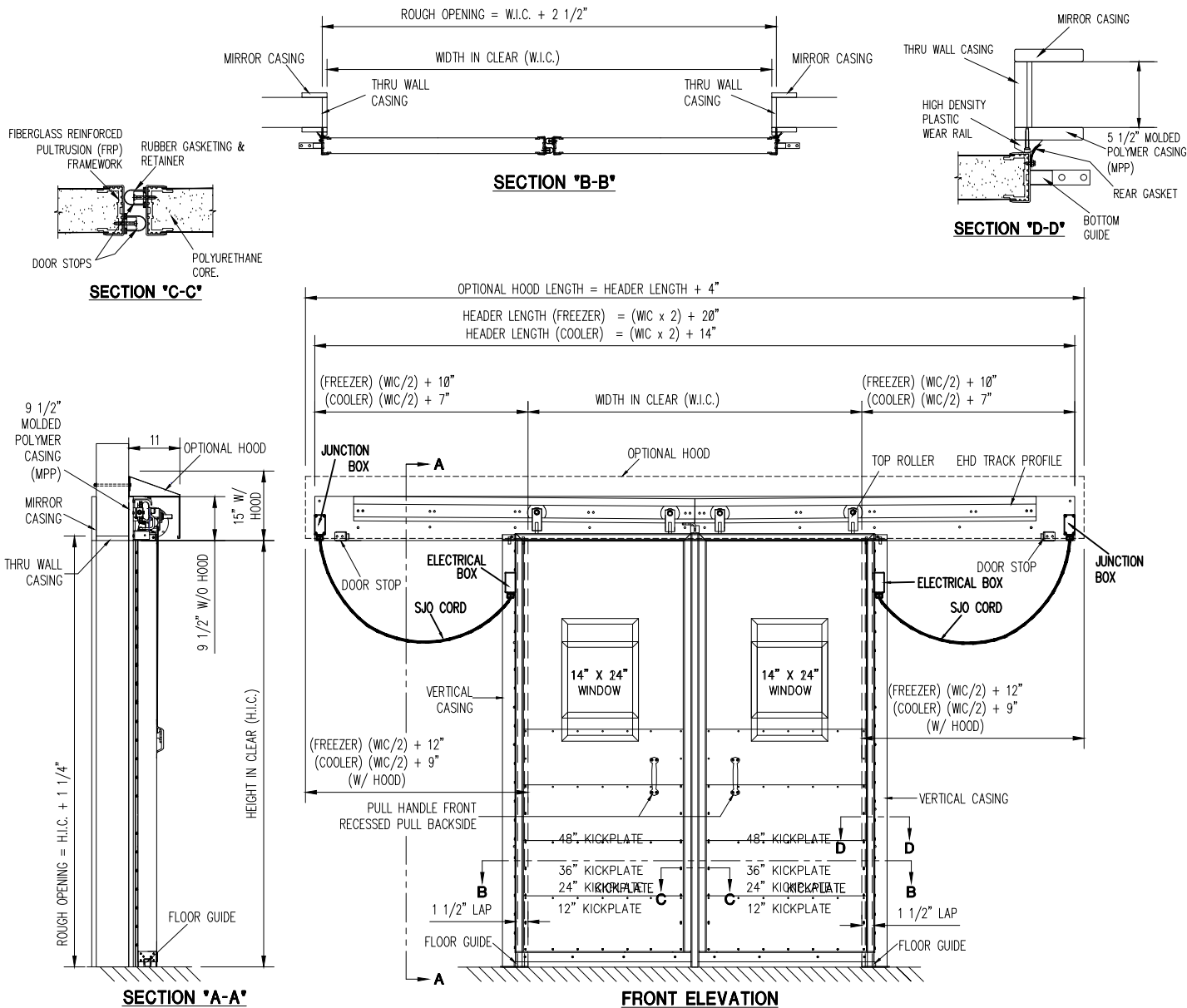
**Chase Doors**


Tel: (800) 543-4455

FAX: (800) 978-6570

www.chasedoors.com

|         |                 |            |     |      |         |
|---------|-----------------|------------|-----|------|---------|
| JOB     | CUSTOMER NO:    | NO. PRINTS | FOR | DATE | REVISED |
|         | CHASE ORDER NO: |            |     |      |         |
| SOLD TO | DRAWN BY:       |            |     |      |         |
|         | SHEET OF        |            |     |      |         |



  
 © CENTER PARTING  
 SLIDE PLAN

|         |                 |    |            |     |      |         |
|---------|-----------------|----|------------|-----|------|---------|
| JOB     | CUSTOMER NO:    |    | NO. PRINTS | FOR | DATE | REVISED |
|         | CHASE ORDER NO: |    |            |     |      |         |
| SOLD TO | DRAWN BY:       |    |            |     |      |         |
|         | SHEET           | OF |            |     |      |         |