

TYPE & THICKNESS OF DOOR:

COOLER FREEZER 4" THICK 6" THICK

OPENING SIZE:

FINISHED OPENING WIDTH (W.I.C.):

FINISHED OPENING HEIGHT (H.I.C.):

WALL THICKNESS:

OPENING DIRECTION:

LEFT (LH) RIGHT (RH)

ENTER ROOM TEMPERATURES:

TEMPERATURE WALL SIDE:

F (PLEASE PROVIDE)

TEMPERATURE TRACK SIDE:

F (PLEASE PROVIDE)

CLADDING - TRACK SIDE:EMBOSSSED WHITE GALVANIZED.
EMBOSSSED BLACK GALVANIZED
EMBOSSSED GALVALUME
EMBOSSSED WHITE ALUMINUM
EMBOSSSED MILL ALUMINUM
CUSTOMSMOOTH WHITE GALVANIZED
SMOOTH GALVALUME
SMOOTH WHITE ALUMINUM
STAINLESS STEEL, #4 FINISH**CLADDING - WALL SIDE:**EMBOSSSED WHITE GALVANIZED.
EMBOSSSED BLACK GALVANIZED
EMBOSSSED GALVALUME
EMBOSSSED WHITE ALUMINUM
EMBOSSSED MILL ALUMINUM
CUSTOMSMOOTH WHITE GALVANIZED
SMOOTH GALVALUME
SMOOTH WHITE ALUMINUM
STAINLESS STEEL, #4 FINISH**VISION WINDOW:**

HEATED NON-HEATED 14" x 14" 14" x 24"

KICK PLATE - (TRACK SIDE):1/16" DIAMOND PLATE 1/8" DIAMOND PLATE STAINLESS STEEL
12" TALL 24" TALL 36" TALL 48" TALL Other:**KICK PLATE - (WALL SIDE):**1/16" DIAMOND PLATE 1/8" DIAMOND PLATE STAINLESS STEEL
12" TALL 24" TALL 36" TALL 48" TALL Other:**CASINGS AND HEADER:****TRACK SIDE:**

MOLDED PLASTIC POLYMER (MPP)(STD)

METAL CLAD MPP

MIRROR SIDE (OPTIONAL):

MOLDED PLASTIC POLYMER (MPP)

METAL CLAD MPP

THRU WALL (OPTIONAL):

MOLDED PLASTIC POLYMER (MPP)

METAL CLAD MPP

ADDITIONAL OPTIONS:

LOCK (TRACK SIDE) WITH INSIDE RELEASE

TRACK HOOD STAINLESS

POWDER COATED

ELEVATED COOLER/FREEZER FLOOR

FLOOR THICKNESS:

JAMB WALL CAPS, NO INSERTS

JAMB WALL CAPS WITH INSERTS

OUTER WIDTH:

OUTER HEIGHT:

INSET:

SPECIAL INSTRUCTIONS TO MANUFACTURER:**Chase Doors**

Tel: (800) 543-4455

FAX: (800) 978-6570

www.chasedoors.com

JOB

CUSTOMER NO:

NO. PRINTS

FOR

DATE

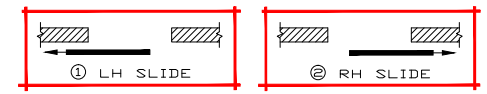
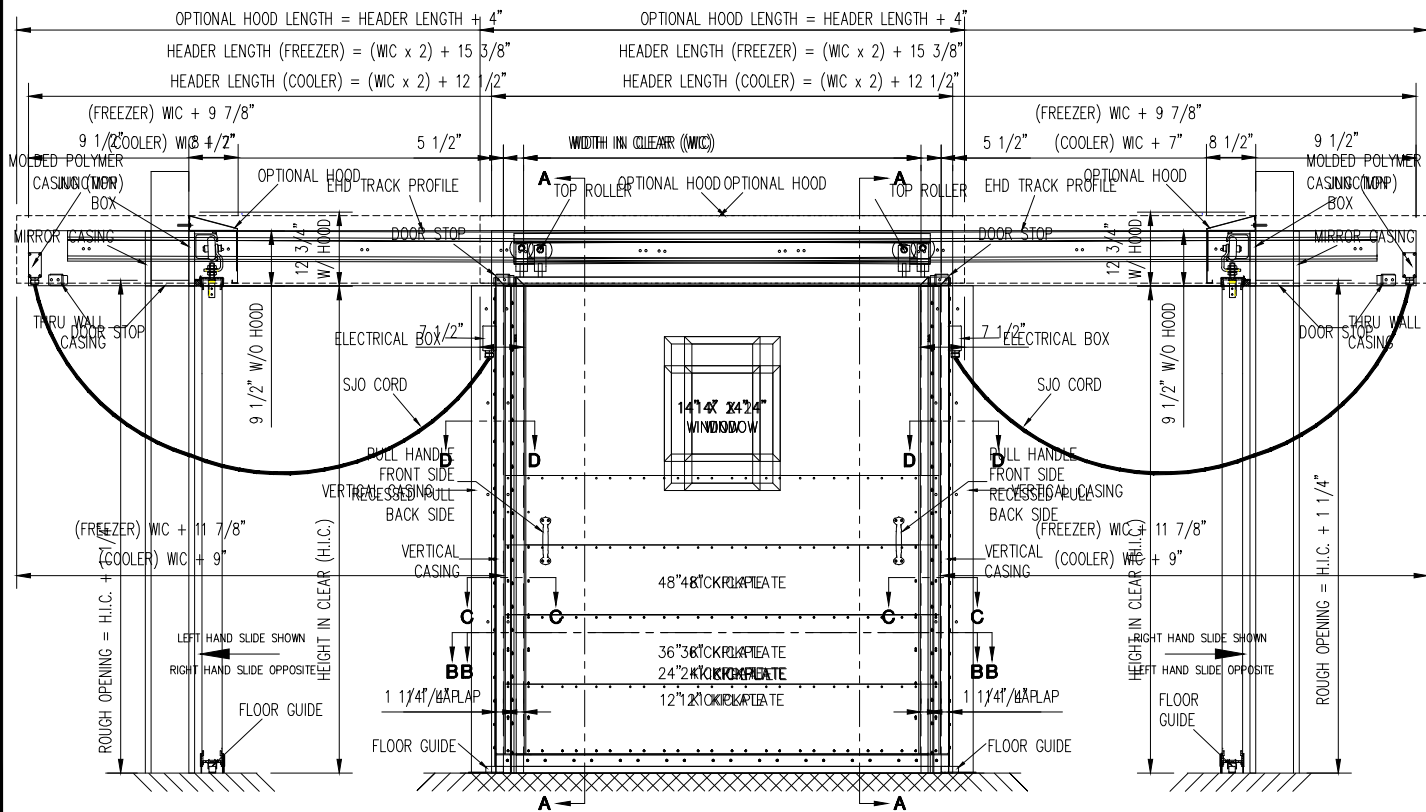
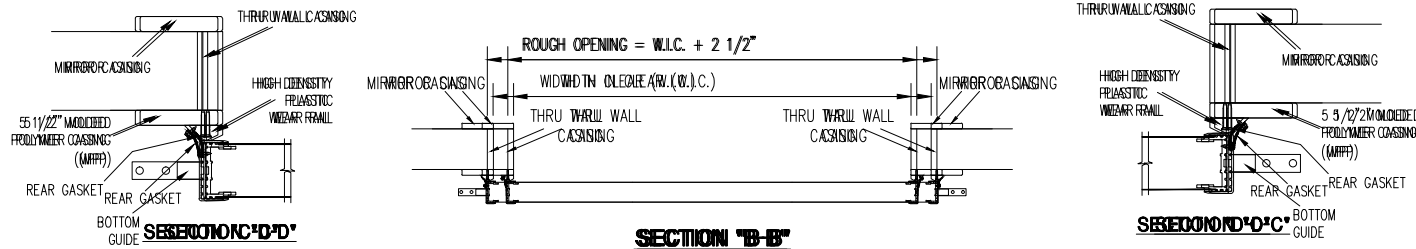
REVISED

CHASE ORDER NO:

DRAWN BY:

SOLD TO

SHEET OF



JOB	CUSTOMER NO:	NO. PRINTS	FOR	DATE	REVISED
	CHASE ORDER NO:				
SOLD TO	DRAWN BY:				
	SHEET OF				