

**TYPE & THICKNESS OF DOOR:**

COOLER FREEZER 4" THICK 6" THICK

**OPENING SIZE:**

FINISHED OPENING WIDTH (W.I.C.):  
FINISHED OPENING HEIGHT (H.I.C.): WALL THICKNESS:

**OPENING DIRECTION:**

LEFT (LH) RIGHT (RH)

**ENTER ROOM TEMPERATURES:**

TEMPERATURE WALL SIDE: F (PLEASE PROVIDE)  
TEMPERATURE TRACK SIDE: F (PLEASE PROVIDE)

**CLADDING - TRACK SIDE:**

EMBOSSSED WHITE GALVANIZED.	SMOOTH WHITE GALVANIZED
EMBOSSSED BLACK GALVANIZED	SMOOTH GALVALUME
EMBOSSSED GALVALUME	SMOOTH WHITE ALUMINUM
EMBOSSSED WHITE ALUMINUM	STAINLESS STEEL, #4 FINISH
EMBOSSSED MILL ALUMINUM	
CUSTOM	

**CLADDING - WALL SIDE:**

EMBOSSSED WHITE GALVANIZED.	SMOOTH WHITE GALVANIZED
EMBOSSSED BLACK GALVANIZED	SMOOTH GALVALUME
EMBOSSSED GALVALUME	SMOOTH WHITE ALUMINUM
EMBOSSSED WHITE ALUMINUM	STAINLESS STEEL, #4 FINISH
EMBOSSSED MILL ALUMINUM	
CUSTOM	

**VISION WINDOW:**

HEATED NON-HEATED 14" x 14" 14" x 24"

**KICK PLATE - TRACK SIDE:**

1/16" DIAMOND PLATE	1/8" DIAMOND PLATE	STAINLESS STEEL
12" TALL	24" TALL	36" TALL 48" TALL Other:

**KICK PLATE - WALL SIDE:**

1/16" DIAMOND PLATE	1/8" DIAMOND PLATE	STAINLESS STEEL
12" TALL	24" TALL	36" TALL 48" TALL Other:

**CASINGS AND HEADER:**

**TRACK SIDE:**  
MOLDED PLASTIC POLYMER (MPP)(STD) METAL CLAD MPP

**MIRROR SIDE (OPTIONAL):**  
MOLDED PLASTIC POLYMER (MPP) METAL CLAD MPP

**THRU WALL (OPTIONAL):**  
MOLDED PLASTIC POLYMER (MPP) METAL CLAD MPP

**OPERATOR:**

SINGLE SPEED, NEMA 1 (18" PER SECOND)  
SINGLE SPEED, WATER TIGHT, OIL TIGHT (18" PER SECOND)

**VOLTAGE:**

115/1/60	230/1/60	208/3/60
230/3/60	460/3/60	575/3/60

**CONTROLS:**

STEP CONTROL (PULL TO OPEN, PULL TO CLOSE)  
TIMER TO CLOSE (PULL TO OPEN, TIME DELAY TO CLOSE)  
3-BUTTON CONTROL (OPEN, CLOSE, STOP)

**SAFETY DEVICES:**

DUAL SAFETY BEAMS  
PRESENCE SENSOR QTY:

**ACTUATION:**

PULL CORD ON BOTH SIDES  
NOTE: HEATED PULL CORD STANDARD FOR FREEZER DOORS.  
3-BUTTON STATION, NEMA 1 QTY:  
3-BUTTON STATION, NEMA 4 QTY:  
RADIO TRANSMITTER AND RECEIVER QTY:  
MOTION SENSOR QTY:  
BY OTHERS

**ADDITIONAL OPTIONS:**

HASP LOCK WITH ELECTRICAL INTERLOCK, TRACK SIDE  
TRACK HOOD STAINLESS POWDER COATED  
ELEVATED COOLER/FREEZER FLOOR FLOOR THICKNESS:  
JAMB WALL CAPS, NO INSERTS JAMB WALL CAPS WITH INSERTS  
OUTER WIDTH: OUTER HEIGHT: INSET:

**SPECIAL INSTRUCTIONS TO MANUFACTURER:**



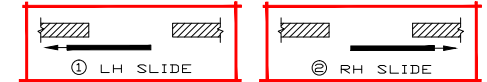
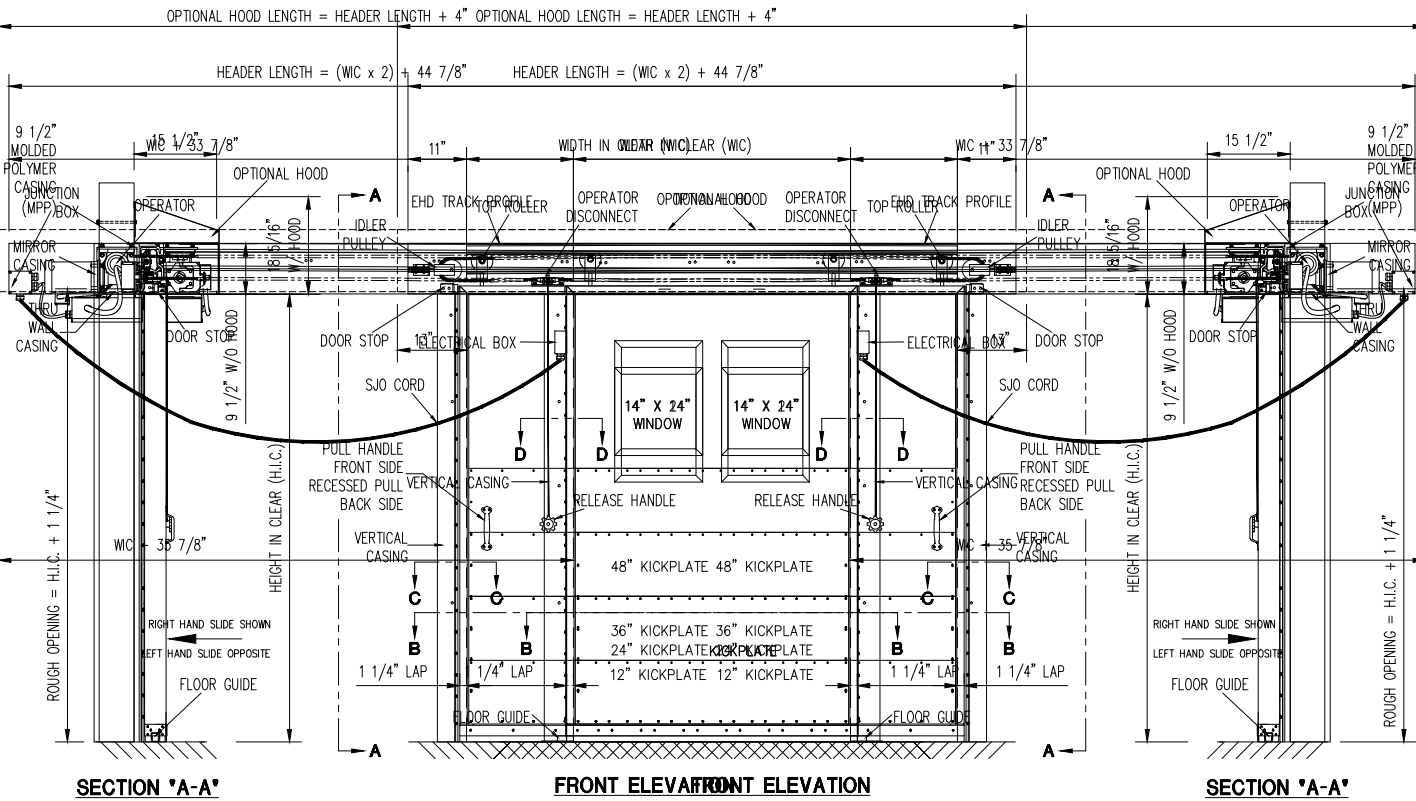
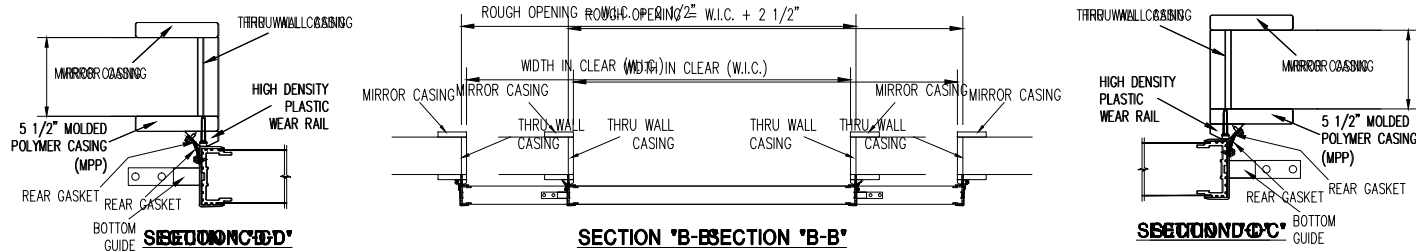
**Chase Doors**

Tel: (800) 543-4455

FAX: (800) 978-6570

www.chasedoors.com

JOB	CUSTOMER NO:	NO. PRINTS	FOR	DATE	REVISED
	CHASE ORDER NO:				
SOLD TO	DRAWN BY:				
	SHEET OF				



SLIDE PLAN

JOB	CUSTOMER NO:	NO. PRINTS	FOR	DATE	REVISED
	CHASE ORDER NO:				
SOLD TO	DRAWN BY:				
	SHEET OF				