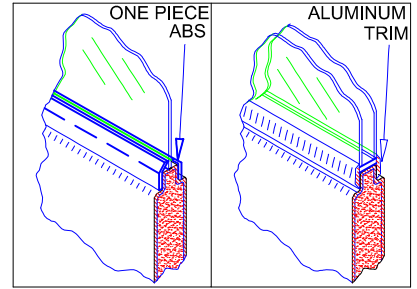


**Backer Plate** QTY: \_\_\_\_\_  
 DOMHW02556  
 DOMHW02557 (Extended)



**SINGLE PANE DOUBLE PANE**

**SINGLE PANE WINDOW KITS**

1/8" Poly, One Piece ABS Frame (2) and Fasteners (Single Pane Only)

Size	Part Number	Panel Width	Qty
10" x 22"	DOMAS1022P	24" & 27"	
14" x 22"	DOMAS1422P	30"	
16" x 22"	DOMAS1622P	32"	
18" x 22"	DOMAS1822P	34"	
20" x 22"	DOMAS2022P	36" to 48"	
22" x 22"	DOMAS2222P	54" & 60"	

**DOUBLE PANE WINDOW KITS**

Sealed Double Pane Unit, Eight Piece Aluminum Frame & Fasteners

Size	Part Number	Panel Width	Qty
10" x 22"	DOMKT24SDP	24" & 27"	
14" x 22"	DOMKT30SDP	30"	
16" x 22"	DOMKT32SDP	32"	
18" x 22"	DOMKT34SDP	34"	
20" x 22"	DOMKT36SDP	36" to 48"	
22" x 22"	DOMKT60SDP	54" & 60"	

**ADA APPROVED WINDOW KITS**

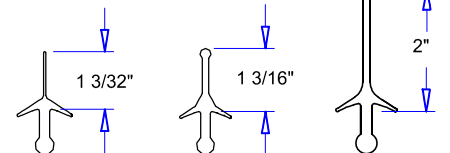
1/4" Poly, ABS Frame (2) & Fasteners (Single Pane Only)

Size	Part Number	Panel Width	Qty
12" x 30" ADA	DOMKT1230A	24" & 27"	
16" x 30" ADA	DOMKT1630A	30"	
20" x 30" ADA	DOMKT2030A	32" & 34"	
24" x 30" ADA	DOMKT2430A	36" to 60"	

**Gaskets**

QTY: \_\_\_\_\_ LENGTH: \_\_\_\_\_

- DOMGS00870     DOMGS00686     DOMGS00719

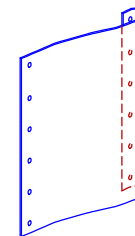


1560 (Std. Leading Edge Single, Std. Back & Bottom)  
 1558 (Std. Leading Edge Double)  
 1535 (Leading Edge Double Large Openings)

**Polyethylene Spring Bumper**

Order By: Height of Bumper, Opening Width and Color

**Example:** 36" High, 48" Wide Opening, Black



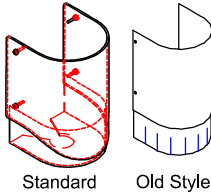
QTY: \_\_\_\_\_  
 Bumper Height: \_\_\_\_\_  
 Opening Width: \_\_\_\_\_  
 Color: \_\_\_\_\_

Industrial Spring Bumpers have a 4" Curl at the Leading Edge.

**Upper Hinge Seal**

QTY: \_\_\_\_\_

- DOMKTHSDUR\* (Std. Kit)  
 D0MPPHSRAP (Std.)  
 D0MPPHSEXT (Extended)  
 D0MGS0014 (Old Style)



\*Includes Hinge Seal, Ring Bushing, Riser and Fasteners

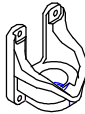
**Roller Assembly**

- D0MASC5508 (STD) QTY: \_\_\_\_\_  
 D0MAS5508S (SS)



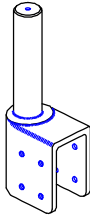
**V-Cam**

- D00AS5561C (STD) QTY: \_\_\_\_\_  
 D04AS55091 (SS)  
 D00ASVCCHO (AL. HO)  
 D04ASVCSHO (SS HO)  
 D00AS14021 (SS LoRise)



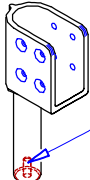
**Upper Hinge Adapter**

- D0OCS55101 (STD) QTY: \_\_\_\_\_  
 D04SS55101 (SS)



**Lower Hinge Adapter**

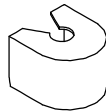
- D0OCS55501 (STD) QTY: \_\_\_\_\_  
 D04SS55501 (SS)



Internal Threads to Accept  
 Optional Spring Assist  
 (Part # 5543, Consult Factory)

**Solid Riser**

- D0MPPSRISR QTY: \_\_\_\_\_



**Pillow Block**

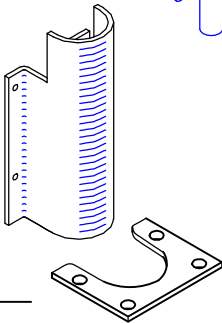
- D00AS5555C (STD) QTY: \_\_\_\_\_  
 D0MAS55555 (SS)



**11" Industrial Hinge Guard**

QTY: \_\_\_\_\_

- D0MALLHGXA (Alum.)  
 D0MPP0LHGX (Poly)  
 D0MSSLHGXS (SS)  
 D0MASICLH2 (Ind. Combo) (Not Pictured)



- D0MALXBASE (Detachable Base Plate) QTY: \_\_\_\_\_  
 D0MFS00033 (Anchors) QTY: \_\_\_\_\_

**Lower Hinge Sweep**

QTY: \_\_\_\_\_

- DONASSTDWSW

**DURULITE INDUSTRIAL DOOR**  
**90° X 90° Hardware**