

DOOR STYLE:

INFITTING W/ FRAME

DOOR FRAME TYPE:

THREE SIDED FLAT FRAME THREE SIDED FLAT FRAME W/ THRU WALL
MIRROR IMAGE FRAME

OPENING SIZE:

FINISHED OPENING WIDTH (W.I.C.):
FINISHED OPENING HEIGHT (H.I.C.): WALL THICKNESS:

FLOOR/RAMP HEIGHT - EXTERNAL: INTERNAL:

STATIONARY DOOR LOCATIONS:

ON LEFT ON RIGHT (STD)

APPLICATION:

COOLER FREEZER 4" THICK 6" THICK
(FREEZER DOORS COME STANDARD WITH HEATED FRAME AND BOTTOM BAR HEAT)

ENTER ROOM TEMPERATURES:

TEMPERATURE WALL SIDE: F (PLEASE PROVIDE)
TEMPERATURE HINGE SIDE: F (PLEASE PROVIDE)

CLADDING - HINGE SIDE:

EMBOSSED WHITE GALVANIZED. SMOOTH WHITE GALVANIZED
EMBOSSED BLACK GALVANIZED SMOOTH GALVALUME
EMBOSSED GALVALUME SMOOTH WHITE ALUMINUM
EMBOSSED WHITE ALUMINUM STAINLESS STEEL, #4 FINISH
EMBOSSED MILL ALUMINUM
CUSTOM

CLADDING - WALL SIDE:

EMBOSSED WHITE GALVANIZED. SMOOTH WHITE GALVANIZED
EMBOSSED BLACK GALVANIZED SMOOTH GALVALUME
EMBOSSED GALVALUME SMOOTH WHITE ALUMINUM
EMBOSSED WHITE ALUMINUM STAINLESS STEEL, #4 FINISH
EMBOSSED MILL ALUMINUM
CUSTOM

LATCH:

STANDARD W/ KEY LOCK (ALSO ACCEPTS PADLOCK)
STAINLESS
STAINLESS W/ KEY LOCK

STANDARD INSIDE RELEASE RECESSED INSIDE RELEASE

PUSH BAR WITH LATCH PANIC WITHOUT LATCH

HINGES:

1245 STANDARD KASONIZED STRAP HINGES
STAINLESS STEEL HINGES FURNISH EXTRA HINGE
CUSTOM:

DOOR CLOSER:

NONE (STD) SPRING HINGE
OFFSET, STANDARD DUTY HEAVY DUTY

VISION WINDOW:

HEATED NON-HEATED 14" x 14" 14" x 24"

KICK PLATE - HINGE SIDE:

1/16" DIAMOND PLATE 1/8" DIAMOND PLATE STAINLESS STEEL
12" TALL 24" TALL 36" TALL 48" TALL Other:

KICK PLATE - WALL SIDE:

1/16" DIAMOND PLATE 1/8" DIAMOND PLATE STAINLESS STEEL
12" TALL 24" TALL 36" TALL 48" TALL Other:

THRESHOLD:

HEATED NON-HEATED
6 3/4" ALUMINUM 6 3/4" STAINLESS STEEL
9 1/2" ALUMINUM 9 1/2" STAINLESS STEEL

ADDITIONAL OPTIONS:

JAMB WALL CAPS JAMB WALL CAPS WITH INSERTS
OUTER WIDTH: OUTER HEIGHT: INSET:
METAL WRAPPED FRP FRAME
METAL WRAPPED THRU WALL FRAME
METAL WRAPPED MIRROR IMAGE FRAME
HEAT IN DOOR PANEL (RECOMMENDED FOR FREEZERS COLDER THAN -20 DEG. F.)
LIGHT SWITCH
THERMOMETER
CUT DOWN:
LEFT JAMB RIGHT JAMB HEADER

SPECIAL INSTRUCTIONS TO MANUFACTURER:

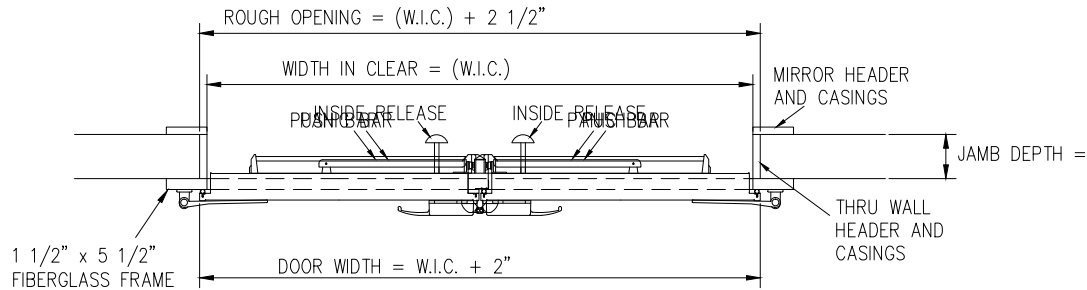


Chase Doors

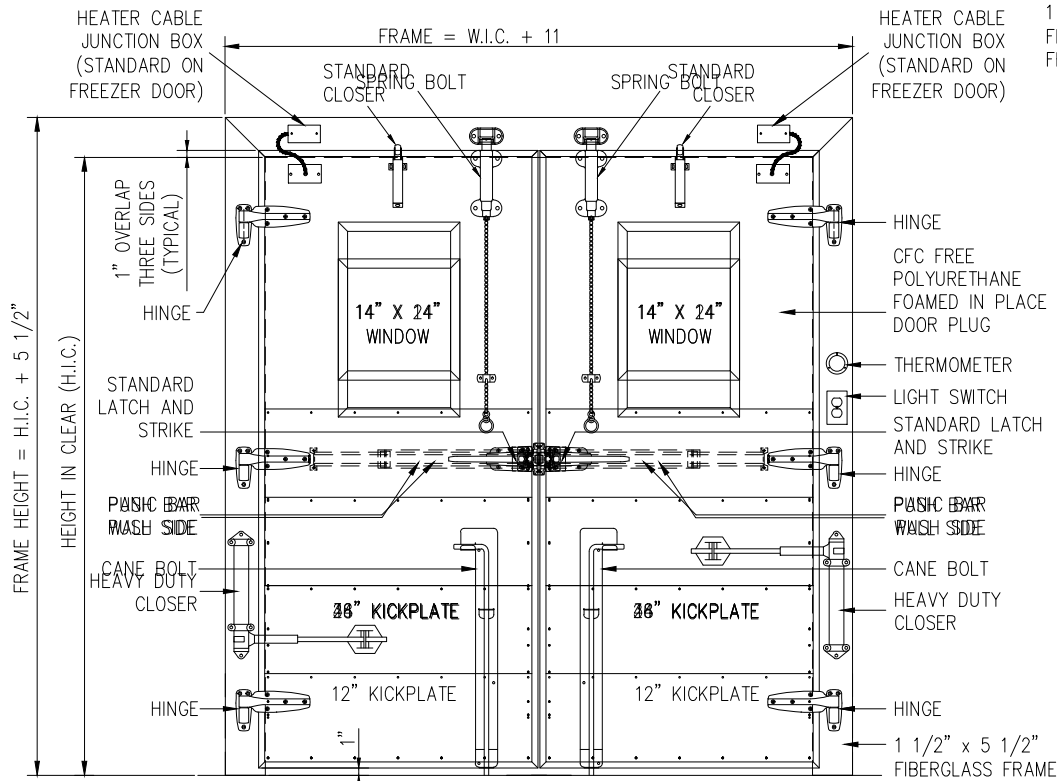
Tel: (800) 543-4455 FAX: (800) 978-6570
www.coldstoragedoorsonline.com

JOB	CUSTOMER NO:	NO. PRINTS	FOR	DATE	REVISED
	CHASE ORDER NO:				
SOLD TO	DRAWN BY:				
	SHEET OF				

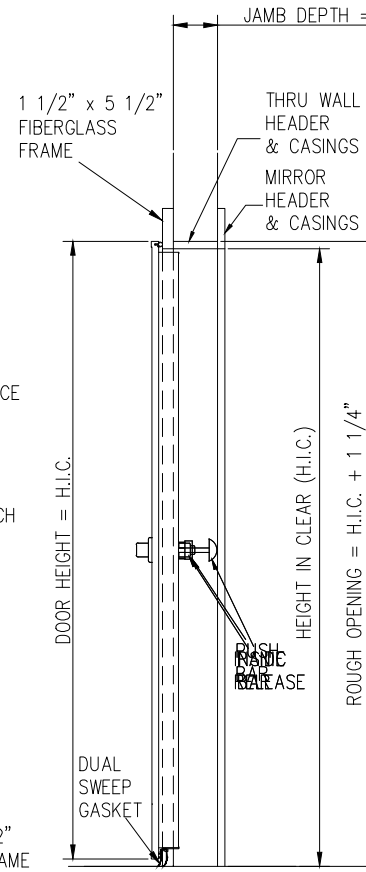
INFITTING DOUBLE SWING DOOR, THREE SIDED FRAME



HORIZONTAL SECTION



FRONT ELEVATION



SIDE VIEW SECTION



Chase Doors

Tel: (800) 543-4455

FAX: (800) 978-6570

www.coldstoragedoorsonline.com

JOB	CUSTOMER NO:	NO. PRINTS	FOR	DATE	REVISED
	CHASE ORDER NO:				
SOLD TO	DRAWN BY:				
	SHEET OF				